



SPELLBINDING NATURAL COLOR™



RITUELDEFILLE.COM

@RITUELDEFILLE
#RITUELDEFILLE

THE ORIGIN



Rituel de Fille is a new vision for beauty inspired by the magical side of natural ingredients, where pigment is elemental, ceremonial and powerful.

Every Rituel de Fille color is obsessively formulated in-house by the three Ramos sisters to meet our exacting standards. In our Los Angeles studio, we approach our formulation like potion-making: we carefully select each pigment, oil and wax for a clear purpose, and develop each color from the ground up to contain the fewest possible ingredients. We use nothing extraneous, and avoid fillers. This attention to detail creates intense color with opulent textures.

All Rituel de Fille products are entirely natural, and handcrafted without parabens, phthalates, synthetic dyes, synthetic fragrances, PEGs, or plastic-based glitters. We never test on animals, and only source our raw materials from companies that are also 100% cruelty-free. We are proud to be certified cruelty-free by Leaping Bunny.

THE CREATION



All Rituel de Fille products are created to inspire a sense of magic, and embrace the transformative power of makeup that goes beyond beauty. The founders themselves develop every product in a careful, alchemical process using expertise earned through years of study and experimentation. All products are manufactured by hand in our own lab in Downtown Los Angeles.

Rituel de Fille's modern palette brings together exceptional pigments and high-quality ingredients that have long, fascinating histories in cosmetics and art. Each product is developed with exacting professional standards for performance, pigmentation and long wear. Encouraging unlimited creative expression, every single product is safe to use on any part of the face.

Rituel de Fille products are 100% natural, ethically sourced, and made without parabens, phthalates, synthetic dyes or synthetic fragrances. Rituel de Fille is certified cruelty-free by Leaping Bunny, verifying that our finished products and raw materials are never tested on animals at any point in the supply chain.

THE FOUNDERS

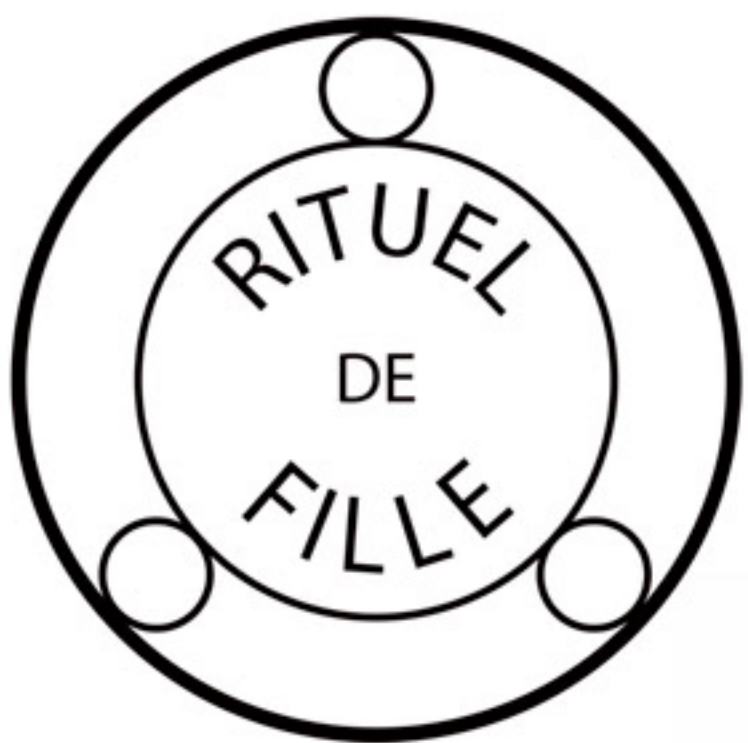


Founded by three sisters, Rituel de Fille has been a bond, a passion, an obsession. We've spent years perfecting our formulations by hand, through an alchemical process using expertise earned through years of study and experimentation. We produce all of our products in-house to meet our exacting standards, making each color with the smallest number of ingredients possible.

Katherine Ramos is an accomplished writer, editor and fine artist. She is passionate about craftsmanship and materials, and merges intuitive creativity with obsessive research and study. Katherine uses her meticulous writing skill to craft our imagery, while offering a unique expertise on histories and symbolism.

Caroline Ramos is a makeup artist with a background in fashion editorial, and has worked extensively on campaigns for major brands. She brings the same remarkable precision in her artistry to her work in our studio and to our aesthetic. She has developed an extraordinary gift as a formulator, with a deep intuitive understanding of how our ingredients interact to create the final product.

Michelle Ramos is a professional makeup artist who works with high profile talent in the entertainment industry. Her artistry inspires the signature makeup aesthetic that appears in our brand imagery. She is a creative force behind our palette, bringing invaluable product insight to ensure unique wearability in edgy colors.



PRESS

RITUEL DE FILLE PRODUCTS WITH BEAUTY EDITORS AND CULTURAL INFLUENCERS

VOGUE



"The warmth of your fingers gives this really nice integration into the skin," says Goodwin, who singles out Rituel de Fille's coral-tone Delirium shade for special praise. "It's immediate; it gives you that freshness right back—like you went home and maybe took a disco nap!"

allure



Rituel de Fille Rare Light Luminizer Makes You Look Like a Low-Key Earth Angel

NYLON

While we love the products and how great they are to work with, we can't deny that the super-pretty packaging plays a big role in our desire to own the *entire* collection. Sleek, black casing, with a celestial sprinkling of tiny stars, make for a gorgeous addition to our makeup bag.

GLAMOUR

The Beauty Products Celebrity Makeup Artist Fiona Stiles Can't Live Without

Rituel De Fille Ash & Ember Eye Soot

"This is a dry cream shadow that comes in beautiful shades and can either go on as a wash or be built up to a more dramatic eye," says Stiles. "It can also be painted on with an angled brush to use as an eyeliner. I am so in love with this product! I even did an exclusive color with them for Reed



goop

The Concealer We Love in Our 30s Is Just as Good in Our 50s

We're twenty years apart, our skin tones are very different, and the imperfections we look to minimize are more blemishes on one end and dark circles on the other. But when we tried this new concealer, it worked (really, really worked) for both of us.

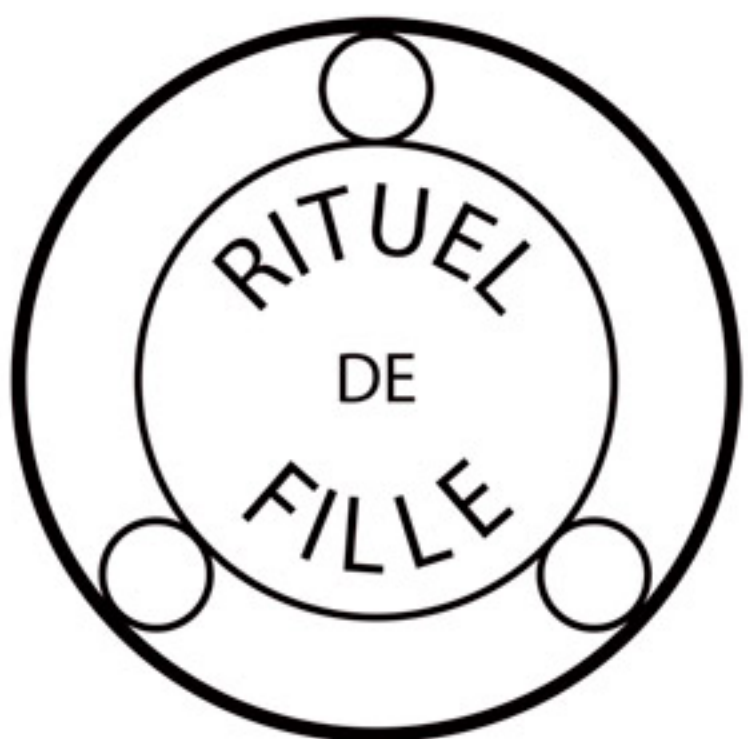


BYRDIE

These Are the Products Our Editors Love More Than Cult Classics

"I think I've gotten the entire Byrdie team hooked on this creamy, glow-giving, light-reflecting highlighter from indie brand Rituel de Fille (and to our new editors, let me know if you're interested, and I'll shove it in your hands to try immediately). The shade selection is incredible, ranging from a purple-tinged holographic to a J.Lo glow-esque rosy-gold. Every time I wear this highlighter, I get compliments. And not to be vain, but it looks amazing in photos. I try any highlighter that comes my way and have yet to find one as multidimensional, blendable, and just all-around gorgeous. If there's any product that deserves a cult following, it's this one." — **Faith Xue, editorial director**





PRESS

RITUEL DE FILLE PRODUCTS WITH BEAUTY EDITORS AND CULTURAL INFLUENCERS

Daily Mail

Are these the best beauty products EVER? A-list makeup artist who works with Jennifer Lawrence and Julia Roberts reveals the five must-have items she cannot live without

For celebrity makeup artist [Jillian Dempsey](#), 52 - who is trusted to care for the faces of everyone from Julia Roberts and [Jennifer Lawrence](#) to Leslie Mann and [Emilia Clarke](#) - there are five front-runners that she ensures she has in her beauty bag at all times, and which she would pick above all others to fill a slimmed-down product collection.

For the complexion, Jillian recommends the [Rituel de Fille The Ethereal Veil Conceal & Cover](#) (\$34), explaining: 'I love to support Indie brands. And this concealer is incredible!'

Although Jillian uses the shade Metis, there are an array of options available to suit every skin tone.

The cream formula has also earned plaudits from a host of beauty critics and A-listers, including Gwyneth Paltrow, whose lifestyle site Goop recommends - and sells - the concealer.

teenVOGUE

Best Highlighters According to Celebrity Makeup Artists

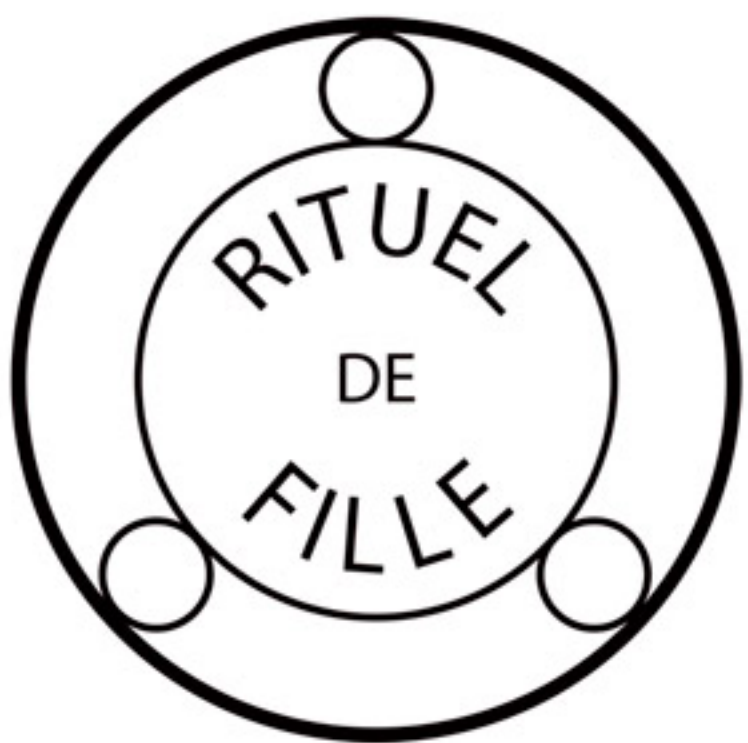
The Artist: Pati Dubroff The Clients: Lily Collins, Margot Robbie, Zoe Kravitz The Highlighter: Rituel De Fille Rare Light Luminizers

BYRDIE

A Love Letter to Rituel de Fille, the Witchy Makeup Line of My Dreams

There's something about the way the creamy, light-reflecting pigments that melt so seamlessly into your skin and the unexpected-yet-flattering shades—not to mention the sleek packaging and high-quality ingredients—that makes me want to scream about it from the mountaintops in a lovesick haze, like someone in a new relationship (oh, just me?).

Every new launch from Rituel de Fille is so unexpected and unique, which probably explains why I'm like a giddy kid on the first day of school every time I receive a new product.



ARTISTRY

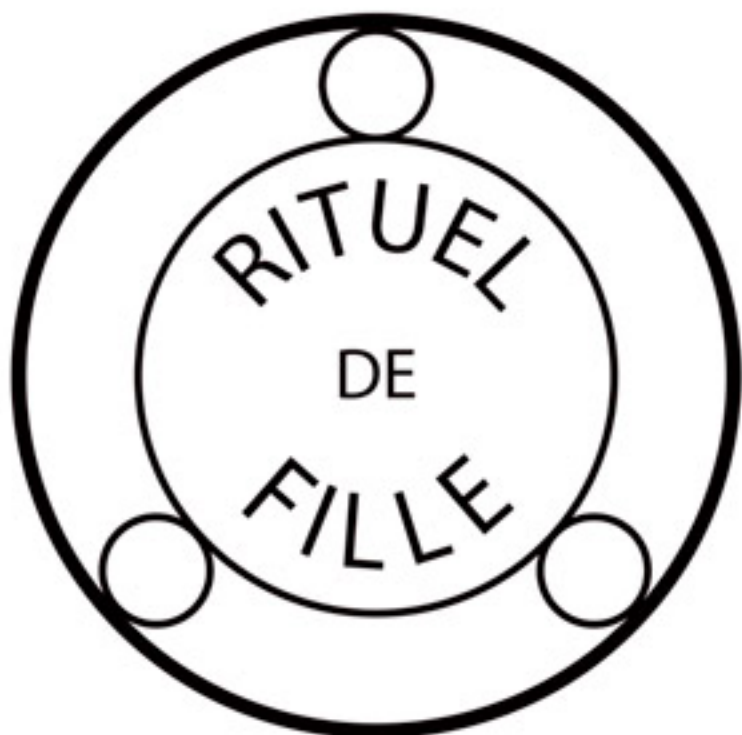
RITUEL DE FILLE PRODUCTS ARE FAVORITES OF SOME OF THE WORLD'S MOST ACCOMPLISHED MAKEUP ARTISTS, AND HAVE APPEARED ON THE FACES OF MANY EXTRAORDINARY TALENTS



PRIYANKA CHOPRA // ARTIST PATI DUBROFF USING VISCERA ASH AND EMBER EYE SOOT
KIERNAN SHIPKA // ARTIST LAUREN GOTT USING SOLARIS RARE LIGHT CRÈME LUMINIZER, SIGIL + VISCERA ASH AND EMBER EYE SOOT, ARA CELESTIAL SPHERE EYE SOOT, CERES THE ETHEREAL VEIL CONCEAL AND COVER, RAVENOUS FORBIDDEN LIPSTICK
KELLY CLARKSON // ARTIST GLORIA ELIAS-FOEILLET USING VISCERA + OBSIDIAN ASH AND EMBER EYE SOOT, WRITTEN IN BLOOD FORBIDDEN LIPSTICK, AND LOVE SPELL ASH AND EMBER EYE SOOT
SELMA BLAIR // ARTIST STEPHANIE NAVARRO USING ANTHELION RARE LIGHT CRÈME LUMINIZER



MISSY ELLIOTT // ARTIST GLORIA ELIAS-FOEILLET USING OBSIDIAN ASH AND EMBER EYE SOOT + ARA CELESTIAL SPHERE EYE SOOT
SOFIA COPPOLA // ARTIST KATIE MELLINGER USING SOLARIS RARE LIGHT CRÈME LUMINIZER
EMMA WATSON // ARTIST KATIE MELLINGER USING HALF LIGHT ASH AND EMBER EYE SOOT
VANESSA HUDGENS // ARTIST ALLAN AVENDAÑO USING LOVE SPELL ASH AND EMBER EYE SOOT

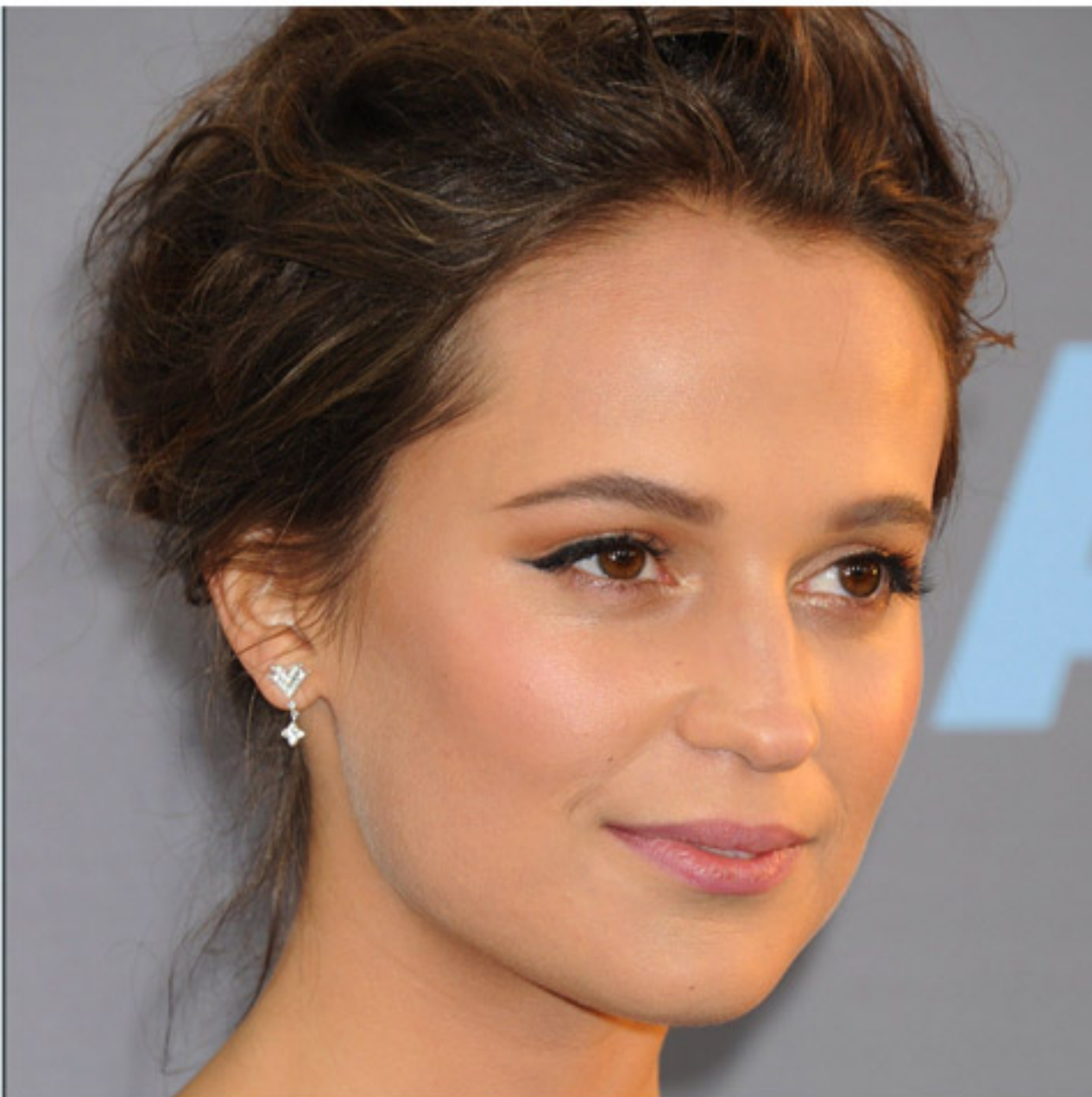


ARTISTRY

RITUEL DE FILLE PRODUCTS ARE FAVORITES OF SOME OF THE WORLD'S MOST ACCOMPLISHED MAKEUP ARTISTS, AND HAVE APPEARED ON THE FACES OF MANY EXTRAORDINARY TALENTS



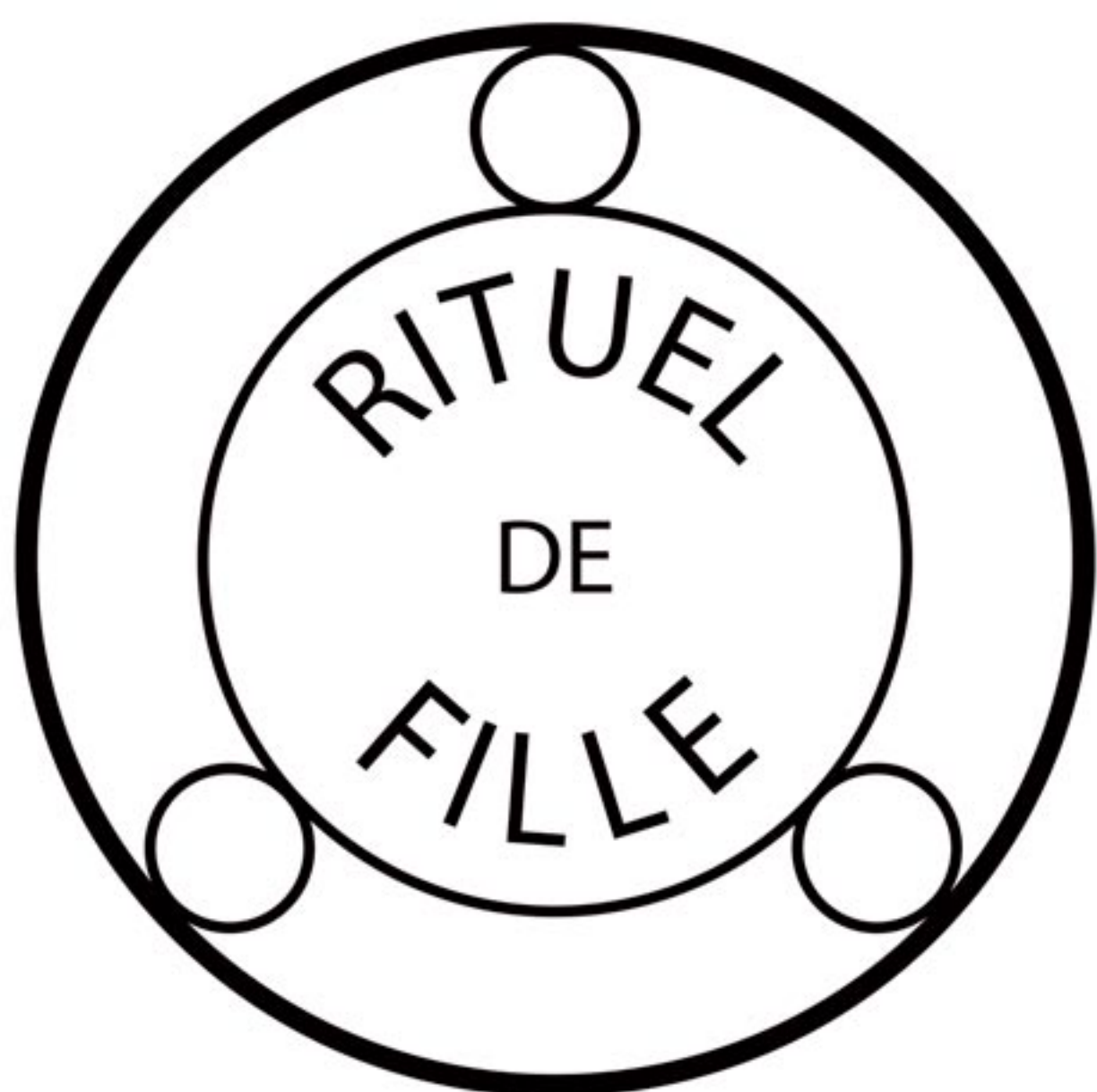
SELENA GOMEZ // ARTIST JAKE BAILEY **CHLOE GRACE MORETZ // ARTIST MAI QUYNH** **CHRISTINA HENDRICKS // ARTIST VANESSA SCALI** **SARAH BOLGER // ARTIST FIONA STILES**
USING OBSIDIAN ASH AND EMBER EYE SOOT USING LOVESICK INNER GLOW CRÈME PIGMENT USING LOVESICK INNER GLOW CRÈME PIGMENT USING LOVE SPELL ASH AND EMBER EYE SOOT



KATE BOSWORTH // ARTIST HUNG VANNGO **MADISON HU // ARTIST RACHAEL VANG** **MARY ELIZABETH WINSTEAD // ARTIST GITA BASS** **ALICIA VIKANDER // ARTIST RACHEL GOODWIN**
USING LOVESICK INNER GLOW CRÈME PIGMENT USING GHOST LIGHT RARE LIGHT CRÈME LUMINIZER USING SIGIL ASH AND EMBER EYE SOOT USING DESIRE INNER GLOW CRÈME PIGMENT
+ ARA CELESTIAL SPHERE EYE SOOT



THE BLACK ORB ENIGMATIC KOHL EYELINER



THE BLACK ORB ENIGMATIC KOHL EYELINER

1 SHADE



ESSENCE

PRODUCT INFORMATION

The Black Orb holds dark secrets. Hidden within this mysterious vessel lies the most exceptional black kohl eyeliner; The Black Orb casts the deepest shadows, defines the sharpest lines, and smokes out into the darkest gaze.

ALCHEMY

UNIQUE AND EXTRAORDINARY

Created with only natural ingredients, this cruelty-free formula applies perfectly for both precision and imprecision in graphic and diffused looks. Abyss is the eyeliner you have always longed for: rich, opaquely semi-matte, and the deepest black. In addition to creating the most dramatic eye looks, this shade is safe for use everywhere on the face including the lips.

ARTISTRY

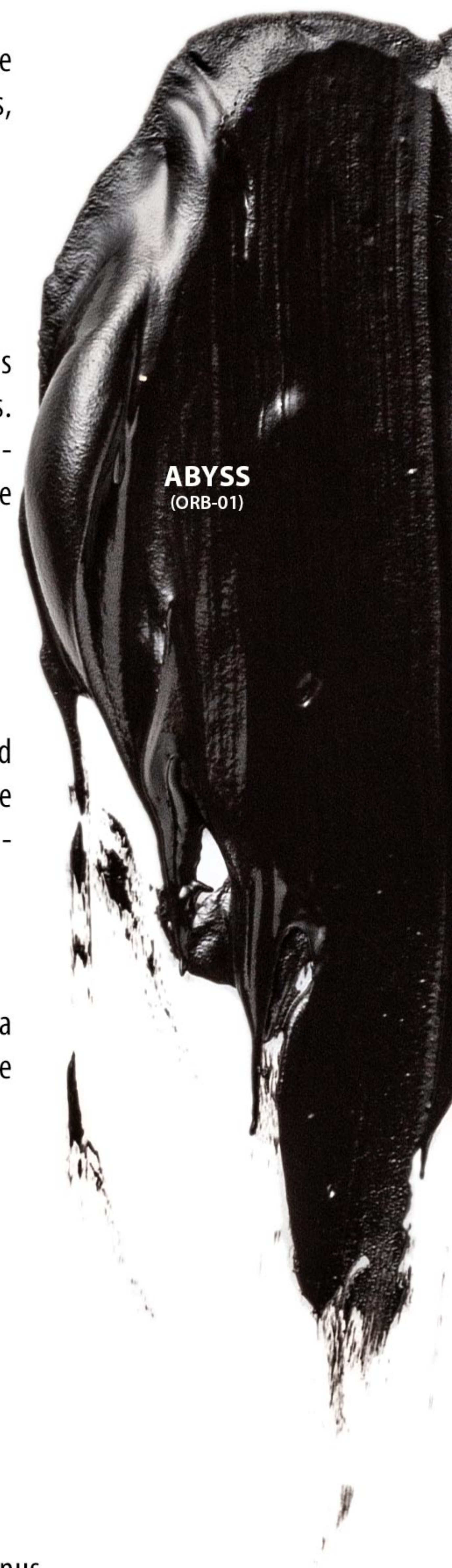
HOW TO APPLY THESE COLORS

For a precise, winged liner we recommend using a densely-bristled, fine angled brush. For a smoky, diffused look, use a smudge brush and blend out from the lashline. Using your fingertip for application is perfect for an intensely-pigmented, undone smokey eye.

ANSWERS TO COMMON QUESTIONS

The Black Orb is neither a gel nor a powder. This rich crème liner is a dense, incredibly pigmented kohl formula that will achieve an opaque black, and the formula might be unlike others you have tried.

Abyss is a vegan shade.



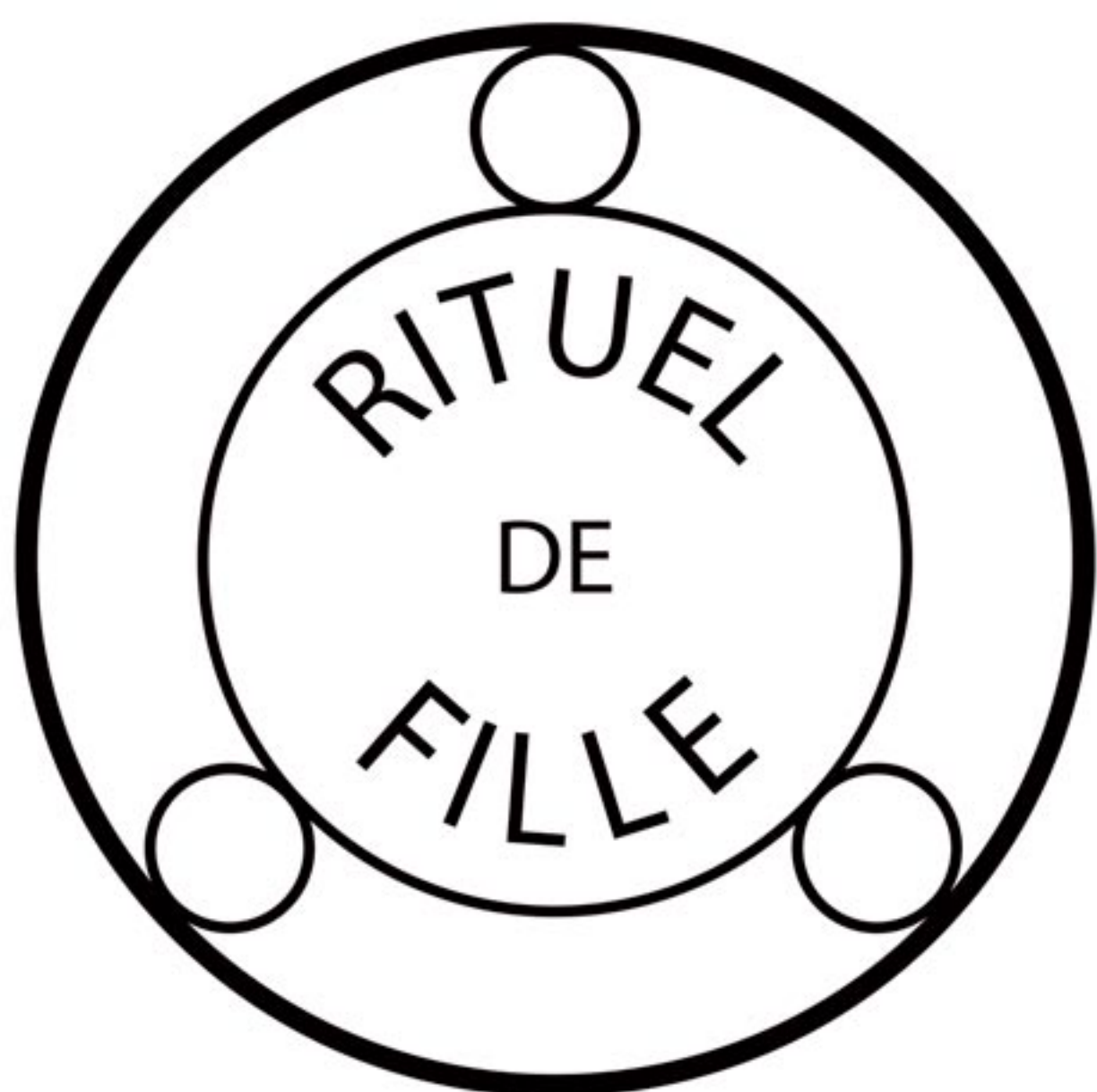
PRODUCT DETAILS

Net wt. 0.24 oz / 6.85 g

INGREDIENTS: Caprylic/Capric Triglyceride, Silica (Silicon Dioxide), Capryloyl Glycerin/Sebacic Acid Copolymer, Jojoba Esters, Euphorbia Cerifera (Candelilla) Wax, Tocopherol (non-GMO soy derived), Rosmarinus Officinalis (Rosemary) Leaf Extract, Carnauba Copernicia Cerifera (Carnauba) Wax MAY CONTAIN: Iron Oxides (CI 77491, CI 77492, CI 77499), Mica (CI 77019), Diheptyl Succinate, Carmine (CI 75470), Ultramarines (CI 77007), Titanium Dioxide (CI 77891), Calcium Aluminum Borosilicate, Calcium Sodium Borosilicate, Tin Oxide (CI 778161), Zinc Oxide (CI 77497), Copper Powder, Bronze Powder, Bixa Orellana (Annatto), Boron Nitride, Helianthus Annuus (Sunflower) Seed Oil



ASH AND EMBER EYE SOOT



ASH AND EMBER EYE SOOT

8 SHADES



ESSENCE

PRODUCT INFORMATION

A magical concoction of intense, smoldering, everlasting color with a rich texture between powder and cream. It does not contain any waxes—so it will never melt with the warmth of your skin, making Ash and Ember Eye Soots highly resistant to creasing and fading.

ALCHEMY

WHAT MAKES THEM EXTRAORDINARY

We create these truly unique products with a carefully balanced, extremely minimal formulation based on just natural pigment and a touch of oil. The secret is in how they are mixed and filled, using artisanal techniques that create their unique texture. All of this must be done carefully by hand.

ARTISTRY

HOW TO APPLY THESE COLORS

Wear as a shadow, liner or base. Apply with fingertips or a dense, firmer-bristled smudge brush for a dramatic eye, or use an angled brush to wear as a liner. Once you are used to the texture and application of Ash and Ember Eye Soots, you will find that they can be used with a wide array of brush styles.

ANSWERS TO COMMON QUESTIONS

The narrower opening of the jar is there by design, gently guiding you toward the best way to pick up product. With either fingertips or brushes, apply vertical pressure; think pressing, rather than horizontal swiping. You don't have to be delicate: Ash and Ember Eye Soots cannot crack or shatter like an average eyeshadow might.

We do not recommend depotting these products. Always be sure to store with the lid tightly sealed. If it begins to feel slightly dry, scrape off the top layer and re-press gently with your finger. Do not ever add anything to the jar, such as water or oil.



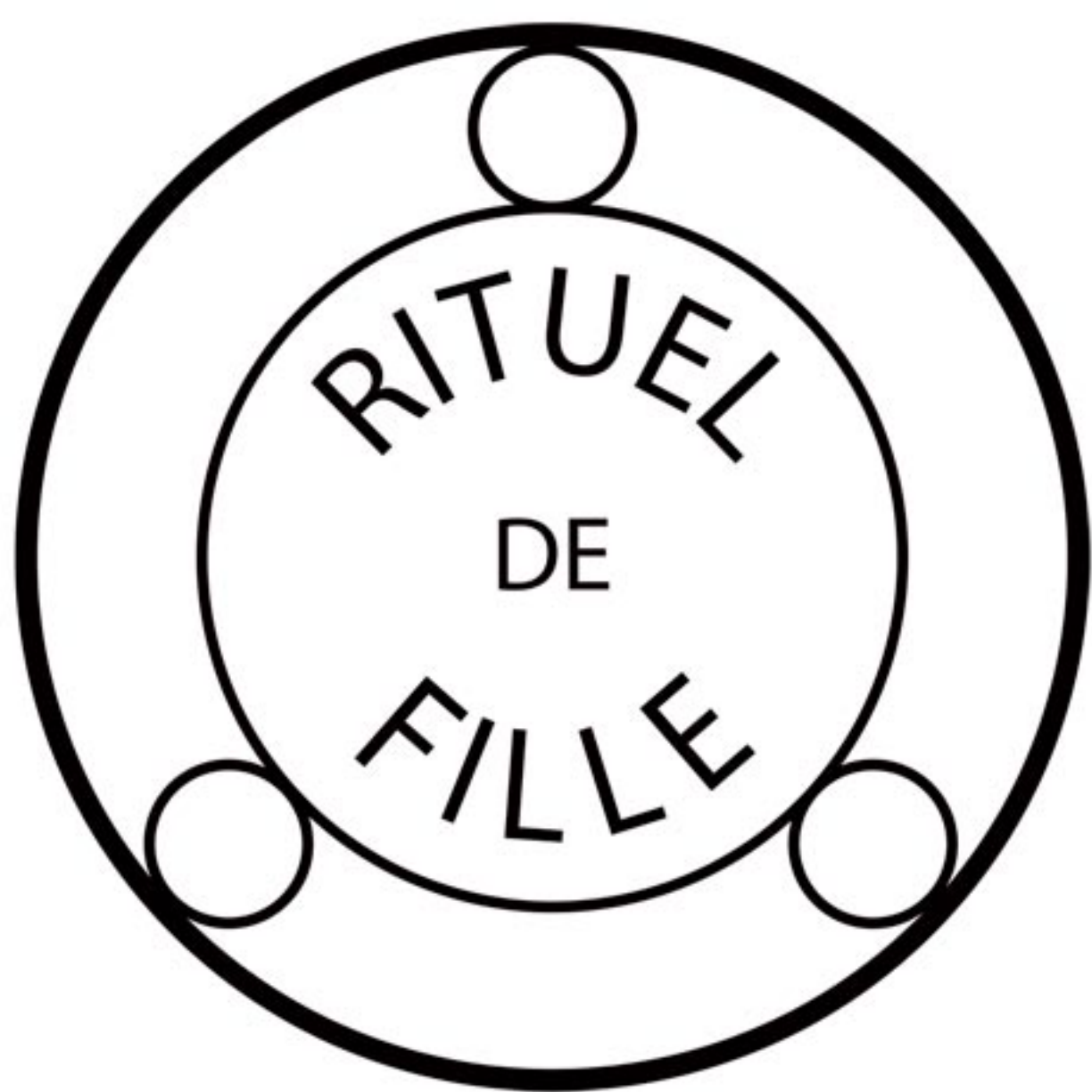
PRODUCT DETAILS

Net wt. 0.2 oz / 5.75 g

INGREDIENTS: Ricinus Communis (Castor) Seed Oil, Silica (Silicon Dioxide), Rosmarinus Officinalis (Rosemary) Leaf Extract, Tocopherol (Non-GMO Soy Derived) MAY CONTAIN: Carmine (CI 75470), Mica (CI 77019), Iron Oxides (CI 77491, CI 77492, CI 77499), Zinc Oxide (CI 77497), Titanium Dioxide (CI 77891), Boron Oxide, Boron Nitride, Copper Powder (CI 77400), Annatto (Bixa Orellana), Bronze Powder (CI 77400), Calcium Sodium Borosilicate, Helianthus Annuus (Sunflower) Seed Oil, Zinc Powder (CI 77945), Tin Oxide (CI 778161), Stearic Acid (Coconut Derived), Aluminum Hydroxide

CELESTIAL SPHERE EYE SOOT





CELESTIAL SPHERE EYE SOOT

4 SHADES



PRODUCT DETAILS

Net wt. 0.13 oz / 3.8 g

INGREDIENTS: Ricinus communis (Castor) Seed Oil, Cera Alba (Beeswax), Euphorbia Cerifera (Candelilla) Wax, Simmondsia Chinensis (Jojoba) Seed Oil, Rosmarinus Officinalis (Rosemary) Leaf Extract, Helianthus Annuus (Sunflower) Seed Oil, Tocopherol (Non-GMO Soy Derived) MAY CONTAIN: Mica (CI 77019), Silica (Silicon Dioxide), Calcium Sodium Borosilicate, Iron Oxides (CI 77491, CI 77492, CI 77499), Carmine (CI 75470), Zinc Oxide (CI 77497), Titanium Dioxide (CI 77891), Boron Oxide, Boron Nitride, Zinc Powder (CI 77945), Annatto (Bixa orellana), Tin Oxide (CI 778161), Stearic Acid (Coconut Derived), Aluminum Hydroxide

ESSENCE

PRODUCT INFORMATION

These magical creations capture the night sky in constellations of scintillating starlight.

Each richly textured, brightly shimmering gelée formulation creates natural magic in a highly pigmented potion—all while being made with beautifully minimalistic ingredients.

ALCHEMY

WHAT MAKES THEM EXTRAORDINARY

We make every boldly shimmering shade of Celestial Sphere Eye Soot with iridescent, dimensional, color-shifting mineral pigments to create something truly unique: each color is incredibly vibrant while maintaining its translucency.

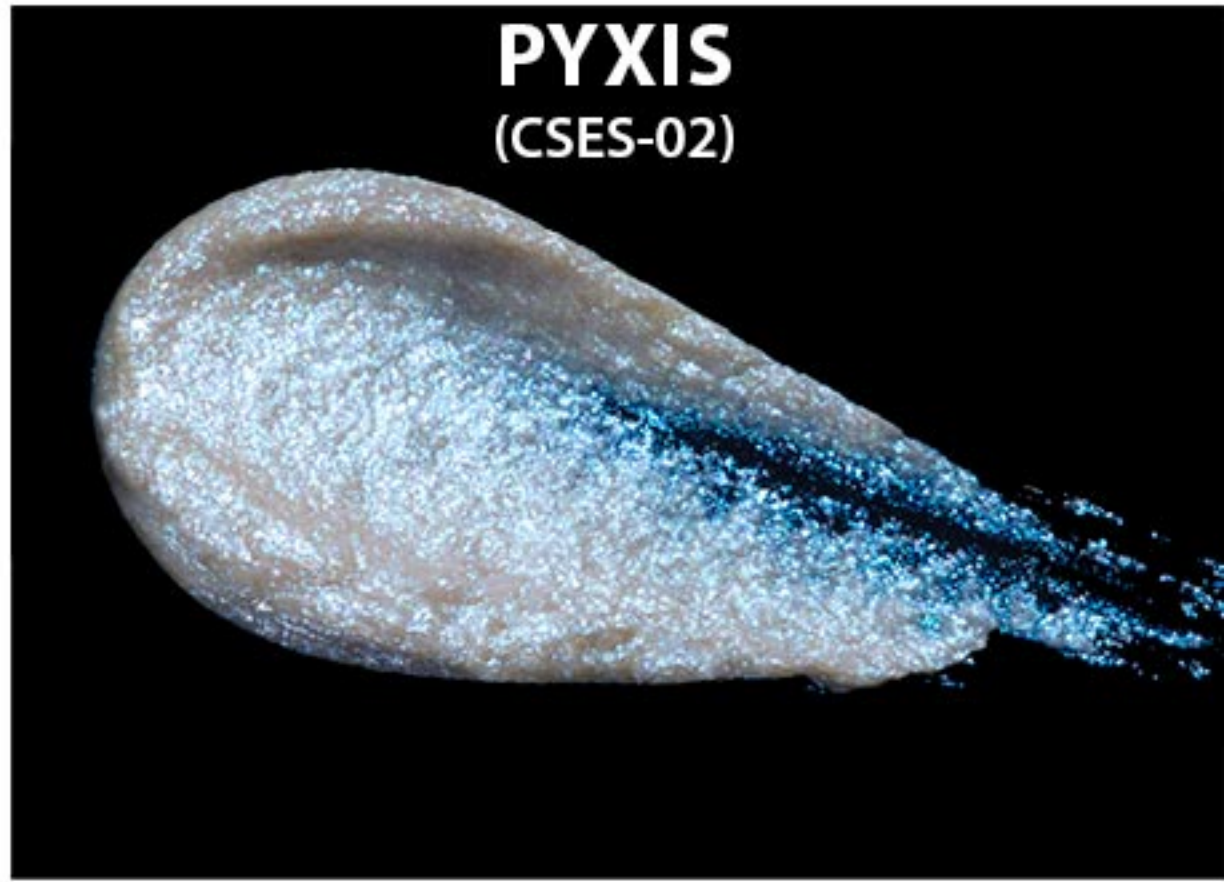
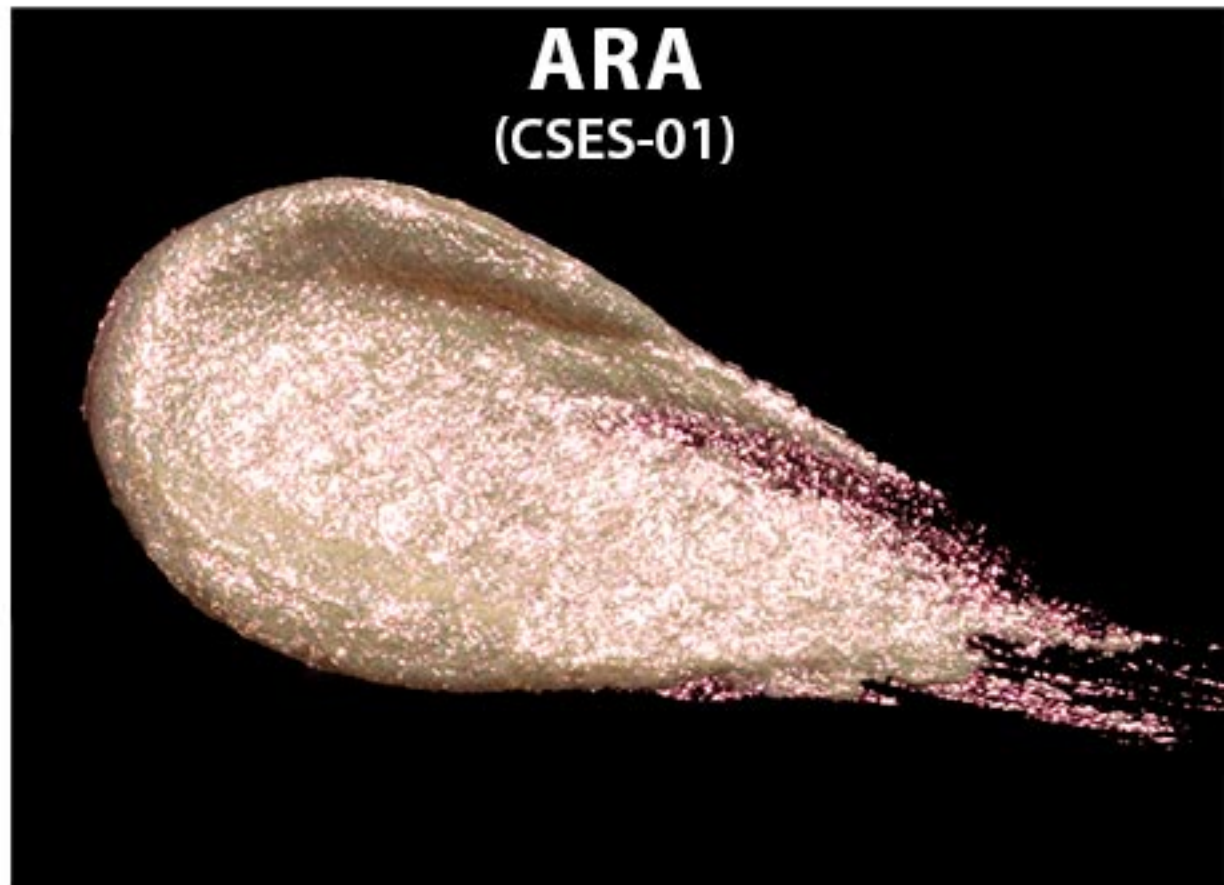
ARTISTRY

HOW TO APPLY THESE COLORS

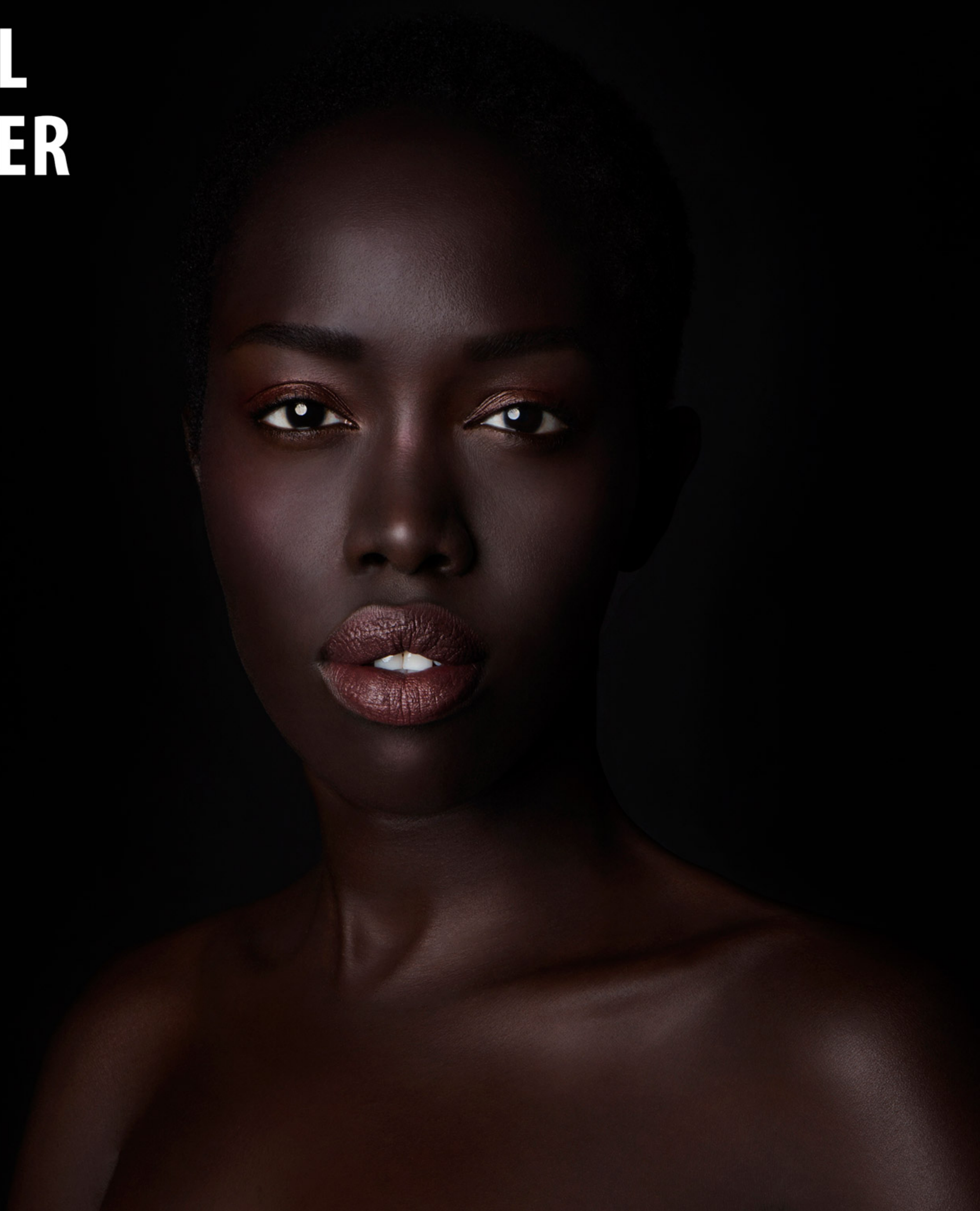
Celestial Sphere Eye Soots are incredibly versatile. Wear on bare skin, layer over any Ash and Ember Eye Soot to create a light-capturing gaze, apply as an extraordinary finish over any of our other colors on any part of the face, or wear as a daring highlighter.

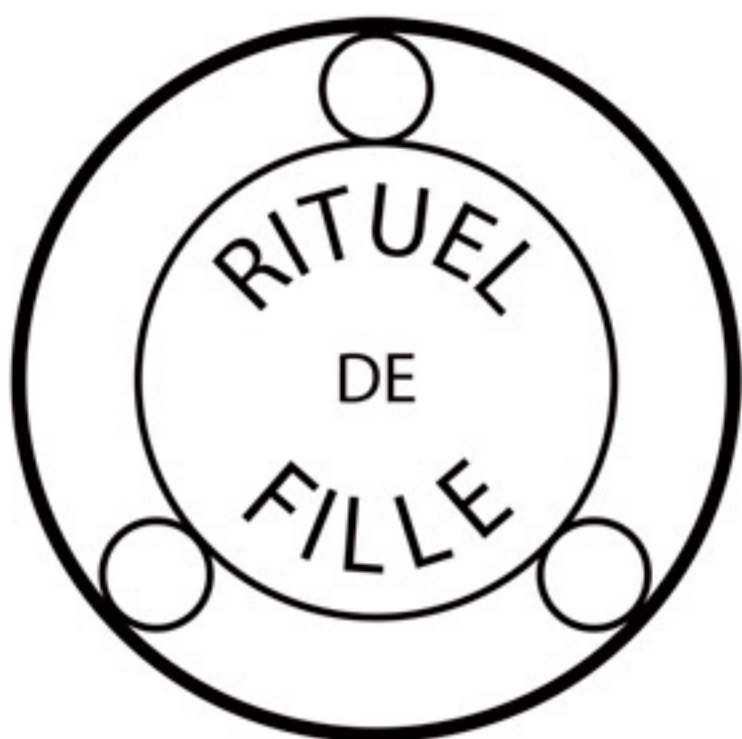
ANSWERS TO COMMON QUESTIONS

Celestial Sphere Eye Soots can be layered or mixed with any of our other products. For longest wear on the eyes, we recommend starting with a base of any Ash and Ember Eye Soot, and tapping your Celestial Sphere Eye Soot over the top. The two products work in perfect balance; the Celestial Sphere Eye Soot creates a remarkable complexity of color with an iridescent effect like the shift of a butterfly wing, while the Ash and Ember Eye Soot creates a long-wearing foundation for the Celestial Sphere Eye Soot to build upon.



THE ETHEREAL VEIL CONCEAL AND COVER





THE ETHEREAL VEIL CONCEAL AND COVER

12 SHADES



ESSENCE

PRODUCT INFORMATION

Drawing from the connection between earth, sky, and the depths beyond, we have looked to celestial bodies to guide us to skin. The Ethereal Veil Conceal and Cover is a remarkable formula created from a boldly minimal list of natural ingredients.

ALCHEMY

WHAT MAKES THEM EXTRAORDINARY

These chameleon shades adapt to your undertones and offer a softly diffused, natural silk finish. The richly blendable texture builds to full coverage for spot concealing, under-eye brightening and full-face complexion enhancement. With a first ingredient of jojoba oil, a beautifully lightweight emollient, and key ingredients including frankincense, castor oil and lanolin, this is an artfully balanced skin-nourishing formula.

ARTISTRY

HOW TO APPLY THESE COLORS

As a spot concealer, apply a shade close to your base color with fingertips or your favorite complexion brush. For under eye color correction, choose a shade 1-2 shades lighter than your spot concealing color to brighten and enliven.

Undertones and depth of color can be used to create full-face complexion enhancement. One shade can conceal beautifully, while two can enliven your whole face with highlight, contour, and overall coverage. Select one shade slightly lighter than your natural skin tone to highlight, one shade slightly darker than your natural skin tone to cast shadows, and mix both for the perfect all-over foundation shade.

ANSWERS TO COMMON QUESTIONS

Follow your normal skincare routine, including moisturizer, before applying.



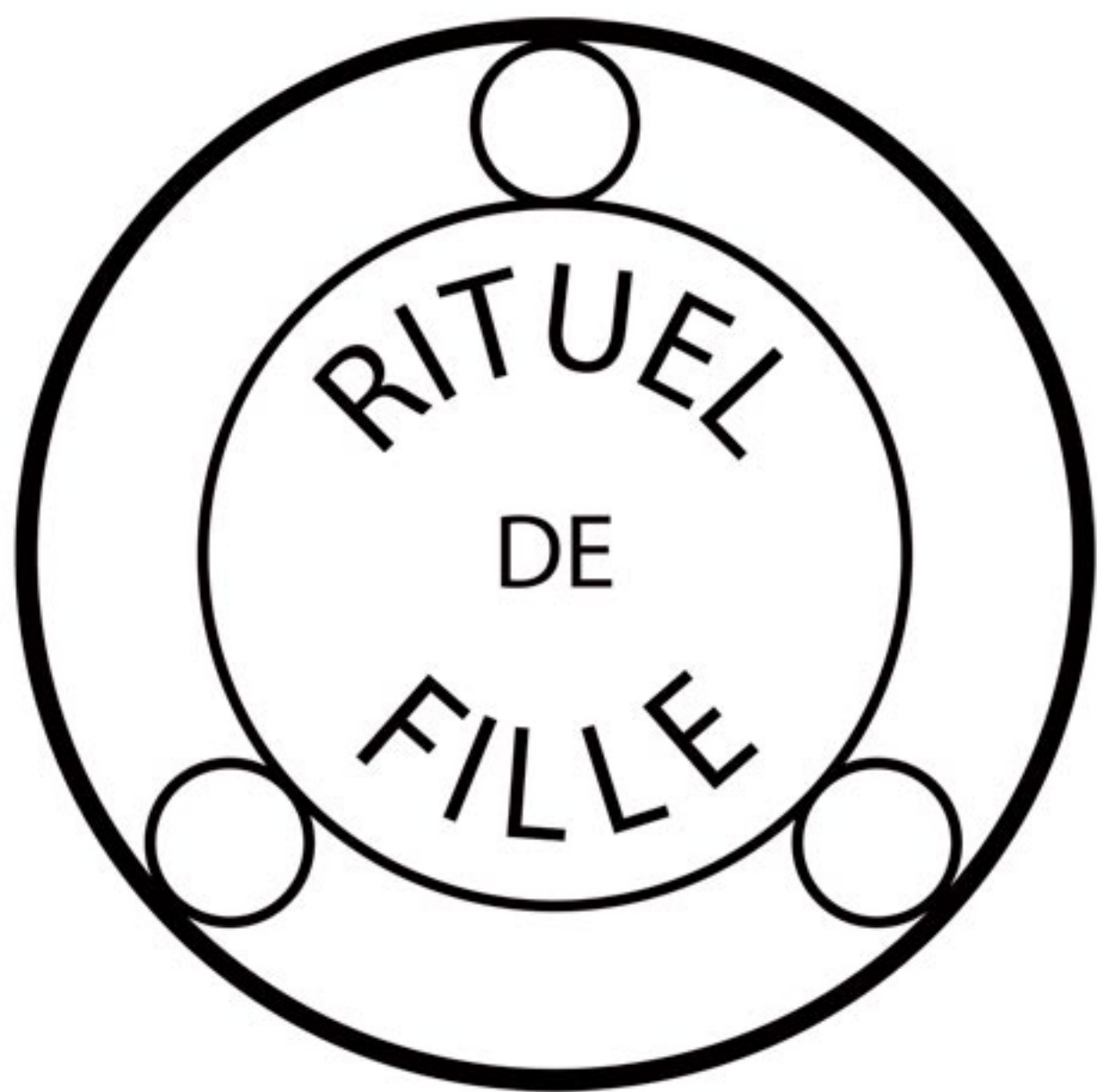
PRODUCT DETAILS

Net wt. 0.19 oz / 5.4g

INGREDIENTS: Simmondsia Chinensis (Jojoba) Seed Oil, Ricinus Communis (Castor) Seed Oil, Lanolin USP, Euphorbia Cerifera (Candelilla) Wax, Copernicia Cerifera (Carnauba) Wax, Cera Alba (Beeswax), Rosmarinus Officinalis (Rosemary) Leaf Extract, Boswellia Carterii (Frankincense) Oil, Tocopherol (Non-GMO Soy Derived) MAY CONTAIN: Iron Oxides (CI 77491, CI 77492, CI 77499), Titanium Dioxide (CI 77891), Silica (Silicon Dioxide), Mica (CI 77019), Titanium Dioxide (Nano), Tin Oxide (CI 778161), Carmine (CI 75470), Bixa Orellana (Annatto), Zinc Oxide (CI 77497), Helianthus Annuus (Sunflower) Seed Oil, Boron Nitride, Boron Oxide, Bronze Powder (CI 77400), Copper Powder (CI 77400), Calcium Sodium Borosilicate, Zinc Powder (CI 77945), Aluminum Hydroxide, Stearic Acid (Coconut Derived)

THE ALCHEMIST HIGHLIGHT INTENSIFIER





THE ALCHEMIST HIGHLIGHT INTENSIFIER

1 SHADE



PRODUCT DETAILS

Net wt. 0.19 oz / 5.4 g

INGREDIENTS: Ricinus Communis (Castor) Seed Oil, Calcium Sodium Borosilicate, Euphorbia Cerifera (Candelilla) Wax, Titanium Dioxide (CI 77891), Lavandula Angustifolia (Lavender) Oil, Silica (Silicon Dioxide), Tin Oxide (CI 77861), Tocopherol

ESSENCE

PRODUCT INFORMATION

The Alchemist is the highlighter for your highlighters, a transformative topper for your favorite luminous products.

ALCHEMY

UNIQUE AND EXTRAORDINARY

This remarkably radiant, glistening crème product enhances glow, adds a dewy finish and creates mesmerizing iridescent glimmer while maintaining the color of the highlighter beneath. The result is an unmatched radiance that sparkles like sunlight on sea water.

ARTISTRY

HOW TO APPLY THESE COLORS

Our favorite way to apply The Alchemist is with fingertips. Swirl to pick up product, and then apply by tapping it on to achieve the most radiance possible. It works beautifully over any type of highlighter, cream or powder. Due to its unique texture and formula, the same application methods work for either type of base.

ANSWERS TO COMMON QUESTIONS

If worn on its own without a highlighter beneath, The Alchemist is dewy, glimmering and almost entirely transparent.

The Alchemist does not contain any plastic-based glitters.

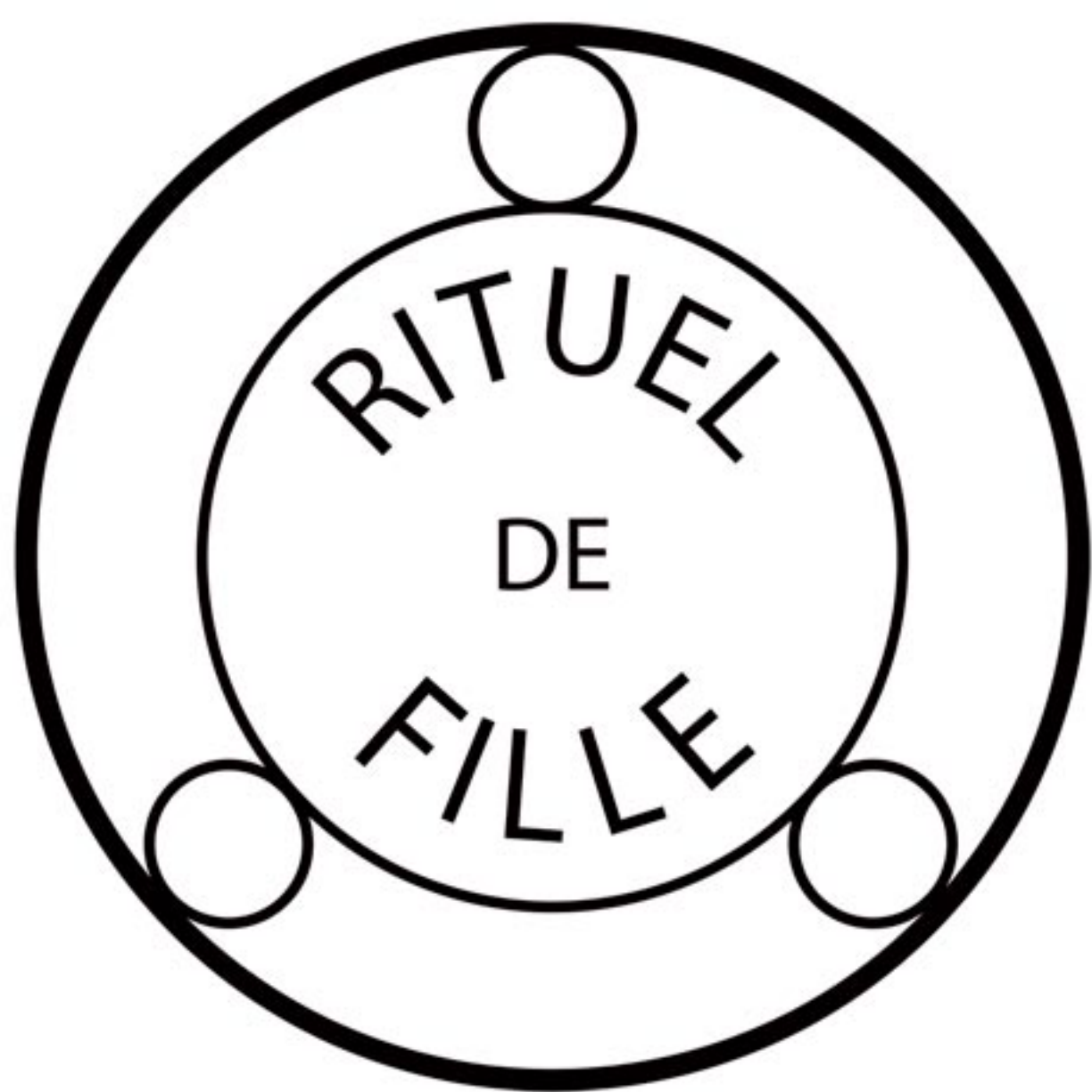
Its shimmer is complex, artful and mature, and it does have a lot of sparkle. Rare Light Crème Luminizers are a great alternative for anyone looking for glow without glimmer.

While most tools can be used for application with The Alchemist, we do not recommend Beauty Blenders or other cosmetic sponges.



METAMORPHIC HIGHLIGHTER





METAMORPHIC HIGHLIGHTER

3 SHADES



PRODUCT DETAILS

Net wt. 0.17 oz / 4.7 g

INGREDIENTS: Ricinus Communis (Castor) Seed Oil, Simmondsia Chinesis (Jojoba) Seed Oil, Euphorbia Cerifera (Candelilla) Wax, Cera Alba (Beeswax), Tocopherol (Non-GMO Soy Derived), Lavandula Angustifolia (Lavender) Oil MAY CONTAIN: Calcium Aluminum Borosilicate, Calcium Sodium Borosilicate, Mica (CI 77019), Titanium Dioxide (CI 77891), Silica (Silicon Dioxide), Tin Oxide (CI 778161), Boron Nitride, Boron Oxide, Zinc Powder (CI 77945), Iron Oxides (CI 77491, CI 77492, CI 77499)

ESSENCE

PRODUCT INFORMATION

You are the prism. Transform your spectrum with this otherworldly crème highlighter. With translucent radiance and sublime color shifts, Metamorphic Highlighters create an unearthly luminosity like an alien inner light.

ALCHEMY

WHAT MAKES THEM EXTRAORDINARY

Metamorphic Highlighters achieve the impossible, shifting with awe-inspiring iridescence while maintaining a dewy and translucent finish that appears to radiate from within.

ARTISTRY

HOW TO APPLY THESE COLORS

We love to apply them on the apples of the cheeks and blend them up to the temples, as well as dab them on the inner corners of the eyes and Cupid's bow. For a more dramatic glow, apply to all of the areas of the face where the sun would naturally hit—bridge of the nose, chin, brow bone and forehead above the arch of your eyebrow. Metamorphic Highlighters are extremely buildable, so you can achieve either a bright and bold or subtler highlight. When applying, remember to pat them on in a tapping motion, instead of wiping them on, to get the most out of your product.

ANSWERS TO COMMON QUESTIONS

The natural beeswax used in Metamorphic Highlighters creates a natural protective barrier. When using one for the first time, it may need to be warmed up and swiped to achieve the perfect application. The answer is actually quite simple: swirl your finger on the surface to create warmth and break the barrier.

Metamorphic Highlighters can be worn on every part of the face, so we encourage creative experimentation. As these are bright, daring highlighters, any customers looking for a subtler finish may prefer Rare Light Crème Luminizers.



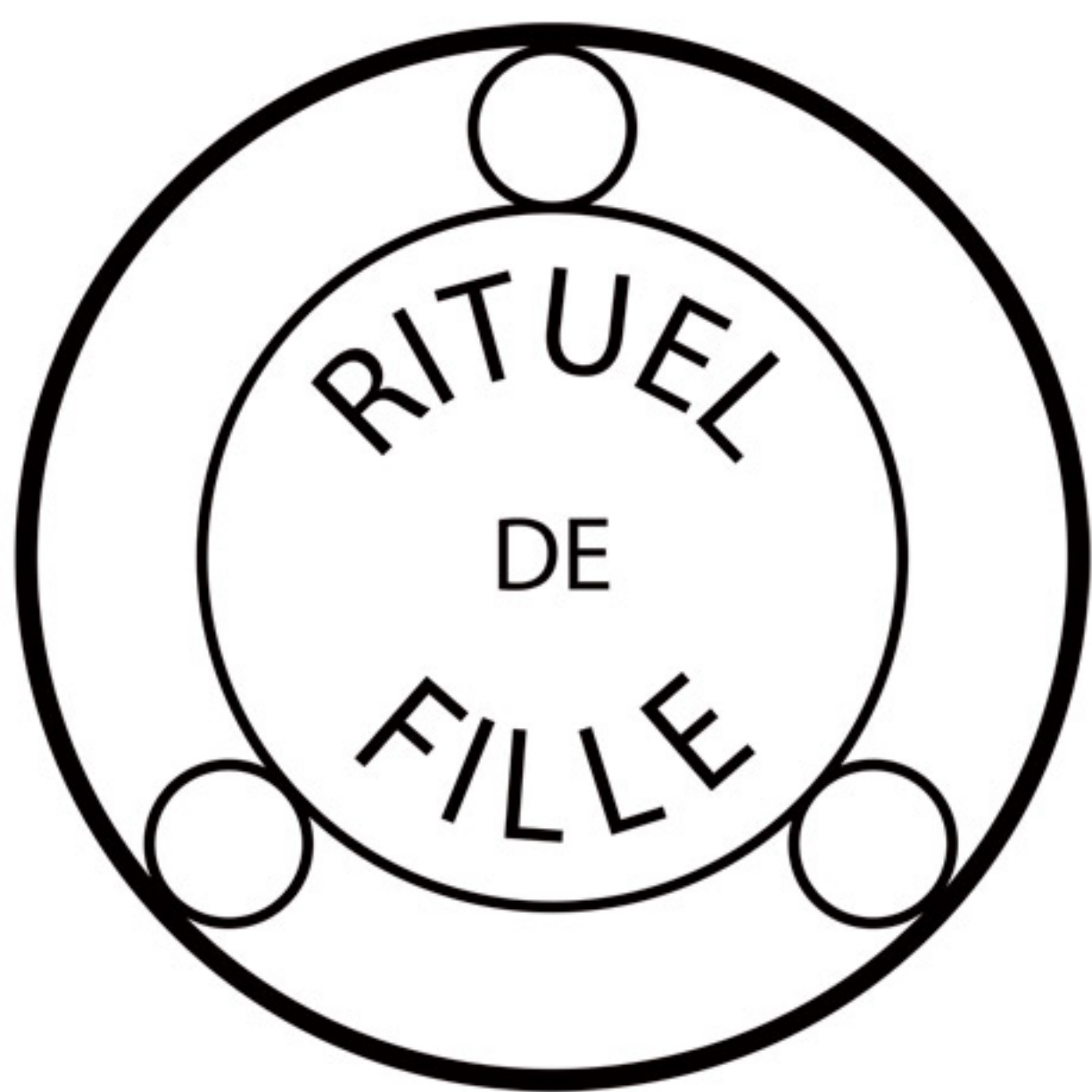
THE HIGH PRIESTESS
(META-01)

THE SORCERER
(META-02)

THE SIREN
(META-03)

RARE LIGHT CRÈME LUMINIZER





RARE LIGHT CRÈME LUMINIZER

6 SHADES



ESSENCE PRODUCT INFORMATION

Inspired by extraordinary light phenomena, each shade imparts an ethereal glow—with a highlight that subtly shifts and transforms to reveal a remarkable depth of color.

ALCHEMY WHAT MAKES THEM EXTRAORDINARY

Rare Light Crème Luminizers are Allure Best of Beauty Award 2017-winning highlighters that impart an ethereal, transformative glow. Each offers a remarkable lit-from-within radiance, in shades from subtle to unearthly—all with a mesmerizing color shift.

ARTISTRY HOW TO APPLY THESE COLORS

We love to apply them on the apples of the cheeks and blend them up to the temples, as well as dab them on the inner corners of the eyes and Cupid's bow. For a more dramatic glow, apply to all of the areas of the face where the sun would naturally hit—bridge of the nose, chin, brow bone and forehead above the arch of your eyebrow. Our luminizers are extremely buildable, so you can achieve either a bold or subtle highlight. When applying, remember to pat them on in a tapping motion, instead of wiping them on, to get the most out of your product.

ANSWERS TO COMMON QUESTIONS

The natural beeswax used in Rare Light Crème Luminizers is an emulsifier, and also creates a natural protective barrier. When using one for the first time, it may need to be warmed up and swiped to achieve the perfect application. The answer is actually quite simple: swirl your finger on the surface to create warmth and break the barrier.



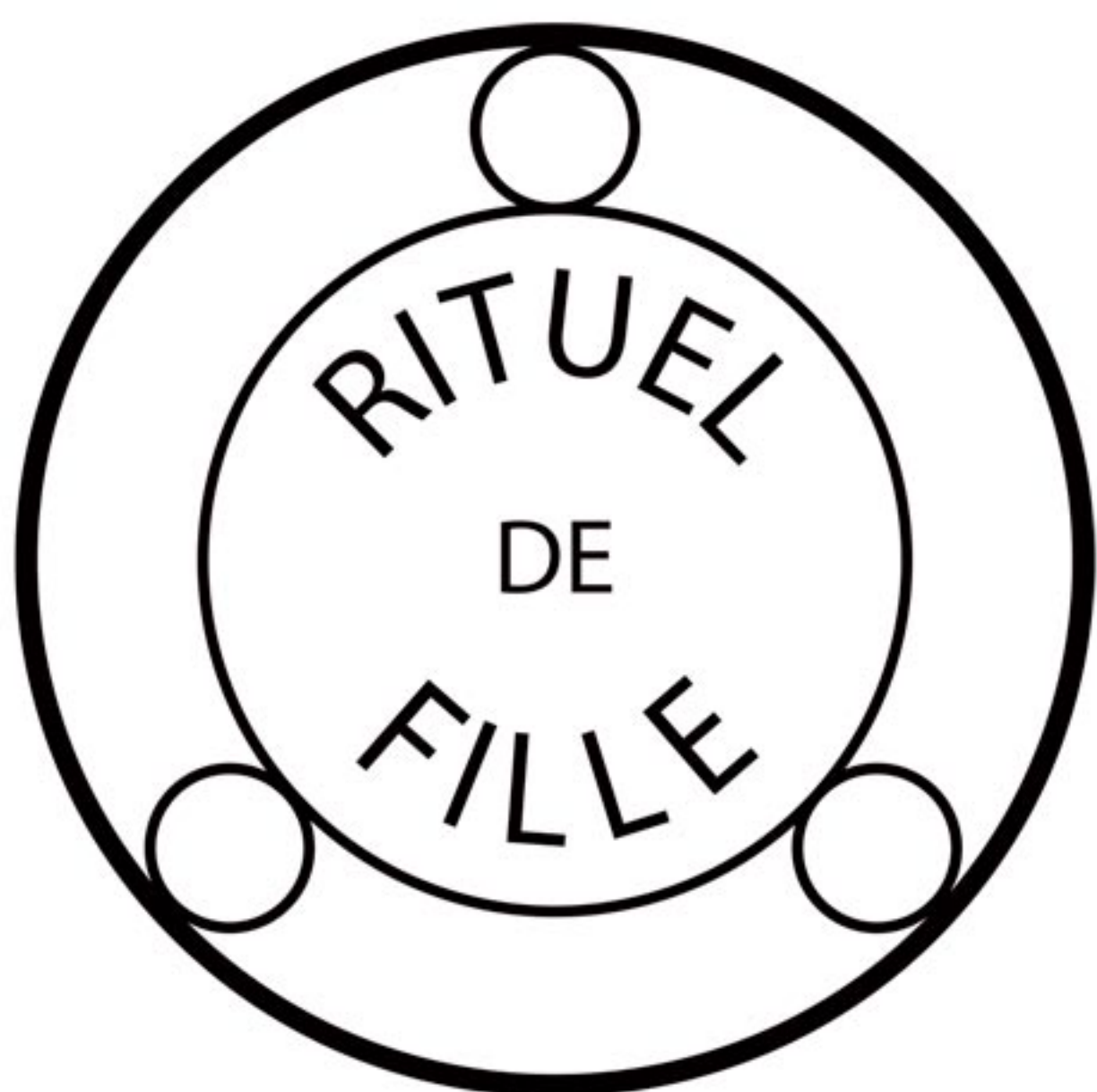
PRODUCT DETAILS

Net wt. 0.2 oz / 5.6 g

INGREDIENTS: Simmondsia Chinesis (Jojoba) Seed Oil, Lanolin USP, Ricinus Communis (Castor) Seed Oil, Euphorbia Cerifera (Candelilla) Wax, Cera Alba (Beeswax), Copernicia Cerifera (Carnauba) Wax, Rosmarinus Officinalis (Rosemary) Leaf Extract, Lavandula Angustifolia (Lavender) Oil, Tocopherol (Non-GMO Soy Derived) MAY CONTAIN: Mica (CI 77019), Titanium Dioxide (CI 77891), Titanium Dioxide (nano), Tin Oxide (778161), Iron Oxides (CI 77491, CI 77492, CI 77499), Carmine (CI 75470), Bixa Orellana (Annatto), Helianthus Annuus (Sunflower) Seed Oil, Boron Nitride, Boron Oxide, Calcium Sodium Borosilicate, Zinc Powder (CI 77945), Bronze Powder (CI 77400), Copper Powder (CI 77400), Stearic Acid (Coconut Derived), Aluminum Hydroxide

INNER GLOW CRÈME PIGMENT





INNER GLOW CRÈME PIGMENT

7 SHADES



ESSENCE

PRODUCT INFORMATION

Inner Glow Crème Pigments are bold, stunningly versatile multi-use shades that can be worn on any part of the face. Apply to the cheeks, lips and eyes by blending out for a sheer wash, or build up to create bold color.

ALCHEMY

WHAT MAKES THEM EXTRAORDINARY

Each highly blendable shade can be sheered out or built up to create a subtle or striking color. They also layer and blend to create new colors with our other products: combine them with one another, blend with Forbidden Lipsticks and Enchanted Lip Sheers, and lend depth and a glossed finish by layering over Ash and Ember Eye Soots.

ARTISTRY

HOW TO APPLY THESE COLORS

Each color comes encased in a starry black mirrored compact, inviting artistic experimentation. Apply with fingertips, sponge, or any preferred brush type; swipe in the pan for bold color payoff or dab for a hint of color. When using fingertips or a sponge, tap or bounce to build up color, and swipe to sheer it out. For a soft application, try a fluffy brush and swirl to create a diffused look.

ANSWERS TO COMMON QUESTIONS

If creasing on the eyes is a concern: though some creasing may be inevitable with a crème product, try applying a dusting of translucent setting powder over the top. They can be applied over Ash and Ember Eye Soots or your favorite primer to fix them to the skin. We also recommend trying a sheerer application.



DELIRIUM
(IGCP-07)



RAPTURE
(IGCP-04)



LOVESICK
(IGCP-01)



LUST
(IGCP-10)



EROS
(IGCP-09)



DESIRE
(IGCP-05)



FRENZY
(IGCP-02)

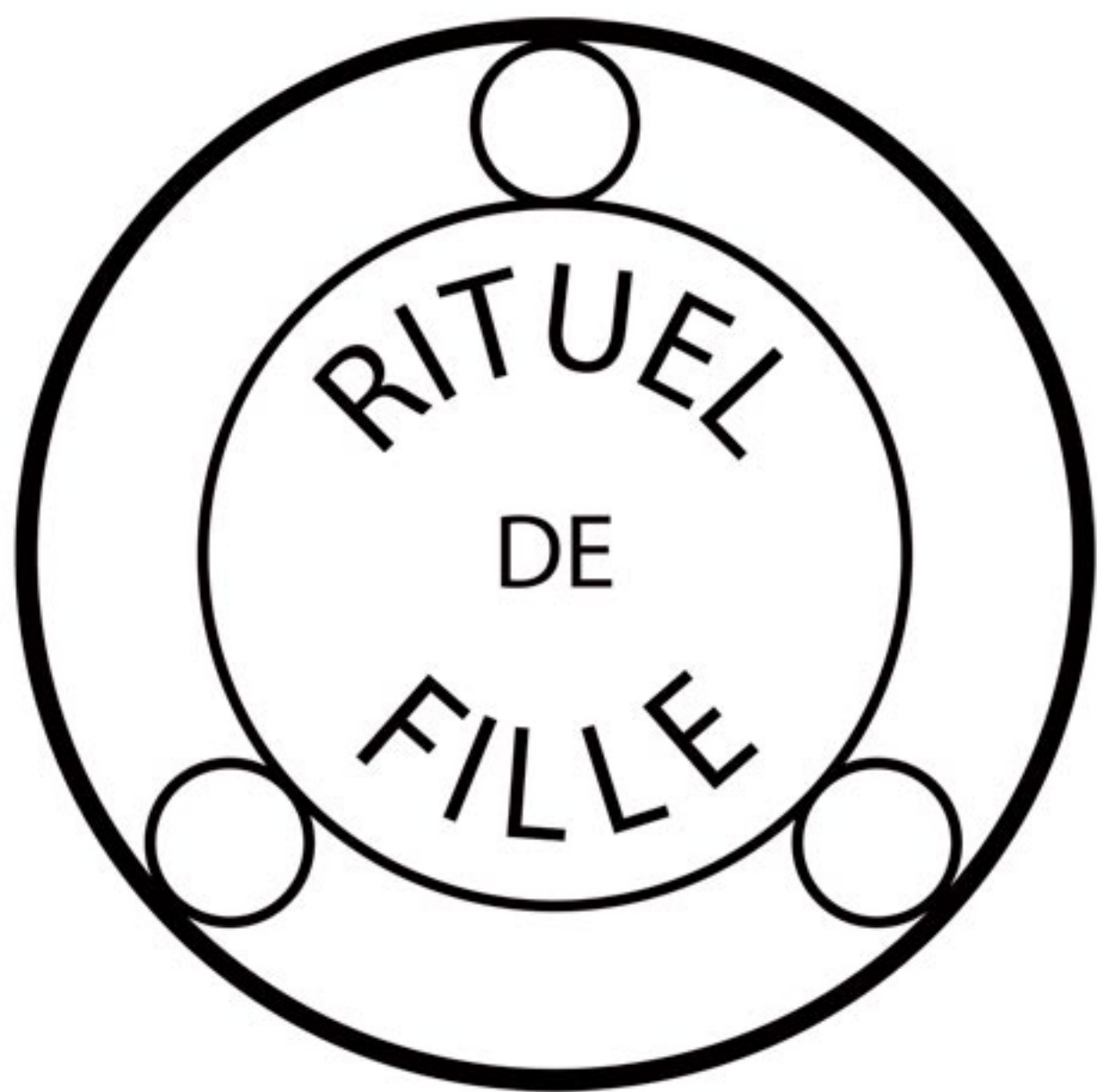
PRODUCT DETAILS

Net wt. 0.13 oz / 3.80 g

INGREDIENTS: Simmondsia Chinesis (Jojoba) Seed Oil, Ricinus Communis (Castor) Seed Oil, Lanolin USP, Silica (Silicon Dioxide), Euphorbia Cerifera (Candelilla) Wax, Cera Alba (Beeswax), Copernicia Cerifera (Carnauba) Wax, Rosmarinus Officinalis (Rosemary) Leaf Extract, Lavandula Angustifolia (Lavender) Oil, Tocopherol (Non-GMO Soy Derived) MAY CONTAIN: Carmine (CI 75470), Mica (CI 77019), Iron Oxides (CI 77491, CI 77492, CI 77499), Bixa Orellana (Annatto), Zinc Oxide (CI 77497), Titanium Dioxide (CI 77891), Boron Nitride, Boron Oxide, Bronze Powder (CI 77400), Copper Powder (CI 77400), Calcium Sodium Borosilicate, Helianthus Annuus (Sunflower) Seed Oil, Tin Oxide (CI 778161), Zinc Powder (CI 77945)



ENCHANTED LIP SHEER



ENCHANTED LIP SHEER

8 SHADES



ESSENCE

PRODUCT INFORMATION

Inspired by ancient botanicals, these highly moisturizing lip sheers offer translucent yet vibrant color.

ALCHEMY

WHAT MAKES THEM EXTRAORDINARY

Enchanted Lip Sheers offer buildable pigmentation that is remarkably lightweight on the lips; even the boldest shades feel like a comfortably long-wearing balm.

ARTISTRY

HOW TO APPLY THESE COLORS

Apply directly from the bullet or diffuse with your fingertip. Enchanted Lip Sheers can also be worn on the eyes and cheeks as buildable crème colors.

ANSWERS TO COMMON QUESTIONS

The natural beeswax used in Enchanted Lip Sheers is an emulsifier, and also creates a natural protective barrier. When using one for the first time, it may feel drier than expected. The answer is actually quite simple: the warmth of your lips—or even the back of your hand—will get application running smoothly after a few swipes.



BLOODROOT
(ELS-07)



DEVIL'S CLAW
(ELS-09)



BITTERSWEET
(ELS-01)



NARCISSUS
(ELS-11)



WHITETHORN
(ELS-08)



DATURA
(ELS-03)



RUE
(ELS-04)



SWARM
(ELS-10)

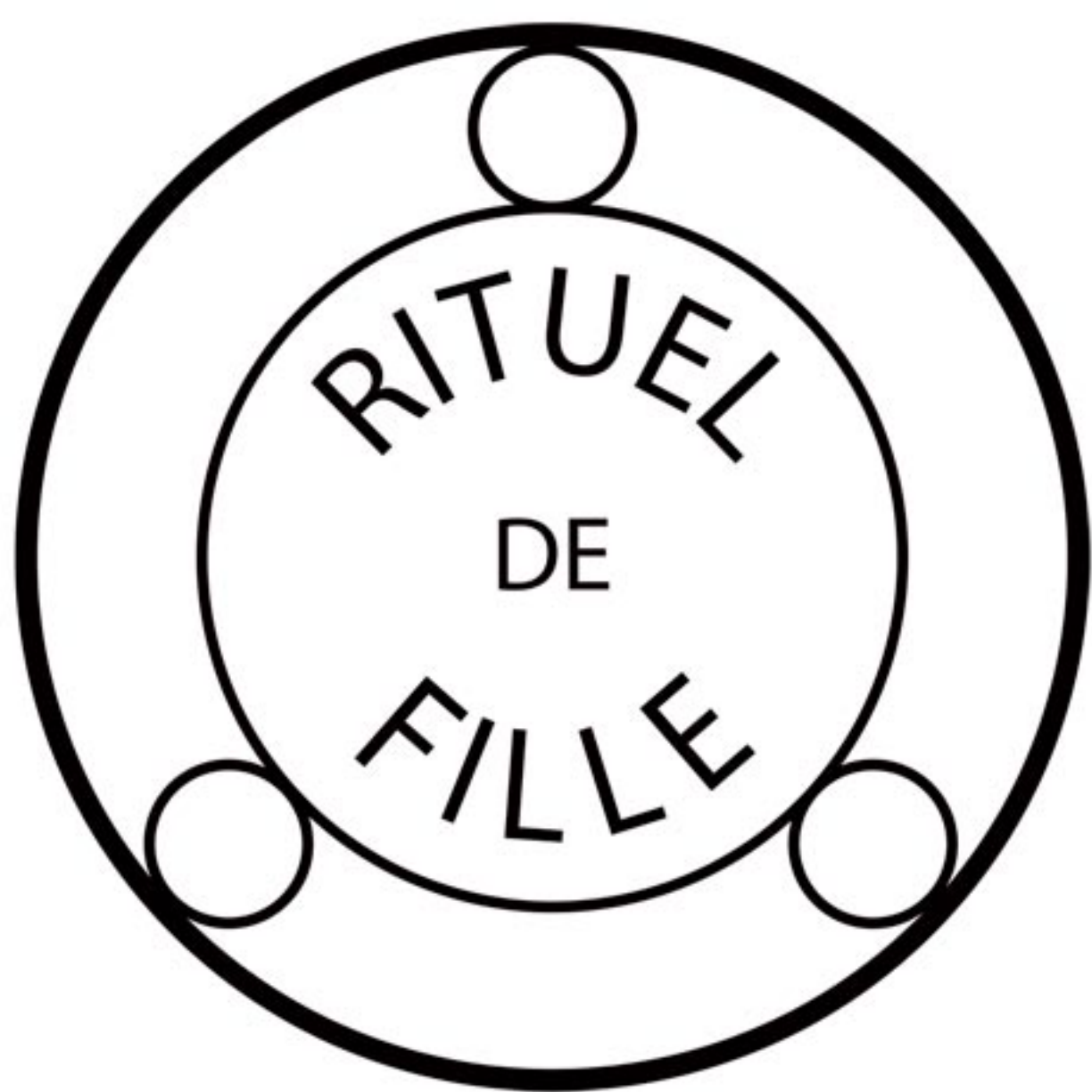
PRODUCT DETAILS

Net wt. 0.06 oz / 1.8 g

INGREDIENTS: Ricinus communis (Castor) Seed Oil, Simmondsia Chinensis (Jojoba) Seed Oil, Silica (Silicon Dioxide), Euphorbia Cerifera (Candelilla) Wax, Cera Alba (Beeswax), Copernicia Cerifera (Carnauba) Wax, Rosmarinus Officinalis (Rosemary) Leaf Extract, Lavandula angustifolia (Lavender) Oil, Tocopherol (Non-GMO Soy Derived) MAY CONTAIN: Carmine (CI 75470), Mica (CI 77019), Iron Oxides (CI 77491, CI 77492, CI 77499), Zinc Oxide (CI 77497), Titanium Dioxide (CI 77891), Bixa Orellana (Annatto), Bismuth Oxychloride (CI 77163), Bronze Powder (CI 77400), Copper Powder (CI 77400), Calcium Sodium Borosilicate, Helianthus Annuus (Sunflower) Seed Oil, Tin Oxide (77861), Aluminum Hydroxide, Stearic Acid (Coconut Derived)

FORBIDDEN LIPSTICK





FORBIDDEN LIPSTICK

8 SHADES



ESSENCE

PRODUCT INFORMATION

An intensely saturated, rich and luxuriant lipstick carefully crafted to reveal bold, daring color and impart enduring moisture.

ALCHEMY

WHAT MAKES THEM EXTRAORDINARY

Forbidden Lipsticks offer beautifully dense pigmentation that is remarkably lightweight on the lips; even the boldest shades feel like a comfortably long-wearing balm.

ARTISTRY

HOW TO APPLY THESE COLORS

Apply directly from the bullet or diffuse with your fingertip. Forbidden Lipstick can also be worn on the eyes and cheeks as bold crème colors.

ANSWERS TO COMMON QUESTIONS

The natural beeswax used in Forbidden Lipsticks is an emulsifier, and also creates a natural protective barrier. When using one for the first time, it may feel drier than expected. The answer is actually quite simple: the warmth of your lips—or even the back of your hand—will get application running smoothly after a few swipes.



PRODUCT DETAILS

Net wt. 0.06 oz / 1.8 g

INGREDIENTS: Ricinus communis (Castor) Seed Oil, Simmondsia Chinensis (Jojoba) Seed Oil, Silica (Silicon Dioxide), Euphorbia Cerifera (Candelilla) Wax, Cera Alba (Beeswax), Copernicia Cerifera (Carnauba) Wax, Rosmarinus Officinalis (Rosemary) Leaf Extract, Lavandula angustifolia (Lavender) Oil, Tocopherol (Non-GMO Soy Derived) MAY CONTAIN: Carmine (CI 75470), Mica (CI 77019), Iron Oxides (CI 77491, CI 77492, CI 77499), Zinc Oxide (CI 77497), Titanium Dioxide (CI 77891), Bixa Orellana (Annatto), Bismuth Oxychloride (CI 77163), Bronze Powder (CI 77400), Copper Powder (CI 77400), Calcium Sodium Borosilicate, Helianthus Annuus (Sunflower) Seed Oil, Tin Oxide (77861), Aluminum Hydroxide, Stearic Acid (Coconut Derived)