

Rituel de Fille

ANCIENT PIGMENT. MODERN COLOR.

ritueldefille.com

@ritueldefille

#ritueldefille

MAKEUP THAT WEARS LIKE MAGIC

Drawing inspiration from the natural world, we reveal the magic in clean ingredients through our makeup and skincare potions.

As an artistic, edgy, and truly ingredient-focused line, our products are exciting, fun, playful and affirming while maintaining the absolute highest standards of formulation.



POTIONS FOR GLOWING SKIN

Rituel de Fille formulas are made with gentle, skin-nourishing ingredients.

This means that our products impart beautiful colors and finishes while caring for the complexion long-term.

We specialize in opulent cream products that merge with the skin, creating natural luminosity like a diffused inner glow.



PRO-LEVEL COLOR PAYOFF

Specializing in nuanced colors with rich pigmentation, Rituel de Fille has found a home in the kits of the world's most accomplished makeup artists, been wear-tested on set, and brought color to major red carpets.

EASY TO APPLY

No matter the shade, Rituel de Fille products are mistake-proof. Everything can be built up and sheered out with ease, and all of our products can be applied with just your fingers. This is makeup for everyone, no matter your experience level.



THE ORIGIN

MAGIC MADE IN LOS ANGELES

Rituel de Fille colors are meticulously formulated in-house to meet our exacting standards. In our Los Angeles laboratory, we approach our formulation like potion-making: we carefully select each pigment, oil and wax for a clear purpose, and develop each color from the ground up to contain the fewest possible ingredients. This attention to detail creates intense color with opulent textures.



THE CREATION

COLOR AND TRANSFORMATION

All Rituel de Fille products are created to inspire a sense of magic, and embrace the transformative power of makeup that goes beyond beauty.

Rituel de Fille's modern palette brings together exceptional pigments and high-quality ingredients that have long, fascinating histories in cosmetics and art. Encouraging unlimited creative expression, every product is safe to use on any part of the face.



ETHICAL INGREDIENTS



Rituel de Fille is Leaping Bunny certified cruelty-free, affirming that we never test on animals, never outsource animal testing, and only source raw materials from companies that are also 100% cruelty-free.

All Rituel de Fille products are handcrafted from ethically-sourced ingredients without parabens, phthalates, synthetic dyes, synthetic fragrances, PEGs, silicones, or plastic-based glitters.



THE CREATORS

A portrait of two women, Caroline and Katherine, standing in front of a dense green leafy background. Caroline, on the left, has vibrant blue hair and is wearing a black top with a silver chain choker. Katherine, on the right, has black hair with bangs and is wearing a black button-down shirt. The image is framed by thin white horizontal lines at the top and bottom.

Caroline (left) expertly runs our in-house product development and manufacturing, as well as directing our distinctive campaigns. She is the force behind our unique formulas and powerful releases. Katherine (right) leads our branding, marketing, and content. She merges intuitive creativity with meticulous research to create our voice.

SKINCARE



THORN POTIONS

3 PRODUCTS

The Skincare for Makeup Lovers

This opulent skincare line is created with the unique needs of makeup lovers in mind, offering a full experience from hydration to priming and makeup removal.

All made without parabens, phthalates, synthetic dyes, synthetic fragrances, mineral oil, animal testing of the finished product or any ingredient. All vegan formulas.



THORN OIL PRIMING FACIAL ELIXIR

The Priming Potion

Thorn Oil is the perfect makeup priming oil. This exquisite blend creates an unparalleled base for your makeup application. Your colors will glide on effortlessly, and wear like part of your skin.

Thorn Oil is the finest skincare. For both makeup and makeup-free days, Thorn Oil cares for your canvas. We carefully formulated this potion to create a healthy, plumped and radiant effect without leaving shine after absorption.

Thorn Oil is for all skin types. With our balanced blend of organic oils and botanicals, this vegan facial oil achieves the extraordinary: it provides gentle moisture for dry skin, and balances oily and combination skin.

PRODUCT DETAILS: 30 mL / 1 fl oz

Ingredients: Sclerocarya Birrea (Marula) Oil*, Rosa Canina Fruit (Rosehip) Oil*, Simmondsia Chinensis (Jojoba) Seed Oil*, Caprylic/Capric Triglyceride, Rosmarinus Officinalis (Rosemary) Leaf Extract*, Helianthus Annuus (Sunflower Seed) Oil*, Rosa Damascena (Bulgarian Rose) Essential Oil*, Raphanus Sativus (Radish) Root Extract, Ipomoea Batatas (Purple Sweet Potato) Root Extract, Citric Acid, Acacia Senegal Gum, Maltodextrin *Certified Organic



THORN MILK

HYDRATING SKIN MIST

The Illuminating Potion

This is a sublime, sensorial mist that feels as beautiful on the skin as it looks in the bottle. This formula imparts lightweight moisture and subtle dewiness with an opulent blend of rosewater, Bulgarian rose, aloe, and botanical oils including rosehip and avocado.

Thorn Milk must be experienced in person to understand its true power and beauty. You will never want to be without it again.

PRODUCT DETAILS: 30 mL / 1 fl oz

Ingredients: Rosa Damascena (Rose) Distillate Water*, Aloe Barbadensis Leaf Juice, Rosa Canina Fruit (Rosehip) Oil*, Glycerin*, Rosa Damascena Flower Extract*, Hydrogenated Avocado Oil, Raphanus Sativus (Radish) Seed Extract, Squalane, Melia Azadirachta Extract, Moringa Oleifera Seed Oil, Melia Azadirachta Leaf Extract, Melia Azadirachta Flower Extract, Corallina Officinalis Extract, Coccinia Indica Fruit Extract, Amber Powder, Solanum Melongena (Eggplant) Fruit Extract, Ocimum Sanctum Leaf Extract, Curcuma Longa (Turmeric) Root Extract, Algin, Levulinic Acid, Sorbic Acid, Benzoic Acid

*Certified organic



THORN PULP CRUNCHY JELLY OIL CLEANSING BALM

The Vanishing Potion

Thorn Pulp Crunchy Jelly Oil Cleansing Balm has a strange, unique, utterly satisfying texture that feels almost icy—and melts with the warmth of your touch. On the skin, it turns into a rich oil that removes makeup unlike anything else. The most pigmented, bold, sparkling colors release and vanish. What remains is dewy, luminous skin.

PRODUCT DETAILS: 45 G | 1.6 OZ

INGREDIENTS: Simmondsia Chinensis (Jojoba) Seed Oil*, Orbignya Oleifera (Babassu) Seed Oil*, Jojoba Esters, Caprylic/Capric Triglyceride, Silica (Silicon Dioxide), Helianthus Annuus (Sunflower) Seed Oil*, Rosmarinus Officinalis (Rosemary) Leaf Extract*, Tocopherol, Levulinic Acid, Rosa Damascena (Bulgarian Rose) Essential Oil*, Raphanus Sativus (Radish) Root Extract (and) Citric Acid (and) Maltodextrin, Sorbic Acid, Benzoic Acid

*Certified Organic



EYES



A close-up, artistic photograph of a woman with long, wavy brown hair. She is lying down with her eyes closed, her face tilted slightly to the left. She is applying a shimmering, light-colored eyeshadow to her upper eyelid using a black-handled brush with dark bristles. Her hand, with pink manicured nails, is visible holding the brush. She has a soft, rosy blush on her cheeks and is wearing a glossy, reddish-pink lipstick. The background is a neutral, light gray. The text "ASH AND EMBER EYE SOOT" is overlaid in the top right corner in a white, sans-serif font, framed by two thin white horizontal lines.

ASH AND EMBER EYE SOOT

ASH AND EMBER EYE SOOT

13 SHADES

A magical concoction of intense, smoldering, everlasting color with a rich texture between powder and cream. Made without any waxes—so it will never melt with the warmth of your skin. We create these by hand with a carefully balanced, extremely minimal formulation based on just natural pigment and a touch of oil.

How to Apply These Colors

Apply with The Eye Soot Brush, fingertips, or your favorite densely-bristled angled brush.

Answers to Common Questions

We do not recommend depotting these products. Always be sure to store with the lid tightly sealed. If it begins to feel slightly dry, scrape off the top layer and re-press gently with your finger. Do not ever add anything to the jar, such as water or oil.

PRODUCT DETAILS Net wt. 0.17 oz / 4.9 g

Ingredients: Caprylic/Capric Triglycerides, Silica (Silicon Dioxide), Helianthus Annuus (Sunflower) Seed Oil, Rosmarinus Officinalis (Rosemary) Leaf Extract, Tocopherol (Non-GMO Soy Derived) May Contain: Mica (CI 77019), Iron Oxides (CI 77491, CI 77492, CI 77499), Zinc Oxide (CI 77497), Titanium Dioxide (CI 77891), Carmine (CI 75470), Boron Oxide, Boron Nitride, Copper Powder (CI 77400), Ricinus Communis (Castor) Seed Oil, Annatto (Bixa Orellana), Bronze Powder (CI 77400), Calcium Sodium Borosilicate, Calcium Aluminum Borosilicate, Tin Oxide (CI 778161), Stearic Acid (Coconut Derived), Aluminum Hydroxide



THE EYE SOOT BRUSH

1 PERFECT TOOL

The best answer to “which brush should I use with Eye Soots?”

Follow up the inky black lacquered birchwood handle, up a scattering of stars, up to the anodized ferrule that glimmers like a constellation.

The raven bristles hold within them a remarkable secret: these vegan fibers were created to perfectly emulate the incredible performance of goat bristles, known for previously-unsurpassed pigment pickup and blending properties.

Soft like velvet, but with enough firmness to offer incredible control, this perfectly-sized brush can be used for all-over washes of color—while still being precise enough to apply to the inner eye and lower lid.



CELESTIAL SPHERE GELÉE EYE GLOSS



CELESTIAL SPHERE GELÉE EYE GLOSS

6 SHADES

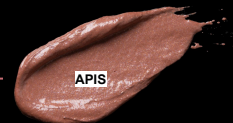
We make every boldly iridescent gelée shade with dimensional color-shifting mineral pigments to create vibrant effects with a translucent finish. Wear on bare lids, layer over any Ash and Ember Eye Soot, or apply as an extraordinary finish on any part of the face.

Answers to Common Questions

For longest wear on the eyes, we recommend starting with a base of any Ash and Ember Eye Soot, and tapping your Celestial Sphere Gelée Eye Gloss over the top. As a gloss product, Celestial Sphere Gelée Eye Gloss will not dry down. However, it taps out easily and creates a beautifully undone look.

PRODUCT DETAILS Net wt. 0.13 oz / 3.8 g

Ingredients: Ricinus communis (Castor) Seed Oil, Cera Alba (Beeswax), Euphorbia Cerifera (Candelilla) Wax, Simmondsia Chinensis (Jojoba) Seed Oil, Rosmarinus Officinalis (Rosemary) Leaf Extract, Tocopherol (Non-GMO Soy Derived) May Contain: Mica (CI 77019), Silica (Silicon Dioxide), Calcium Sodium Borosilicate, Iron Oxides (CI 77491, CI 77492, CI 77499), Carmine (CI 75470), Zinc Oxide (CI 77497), Titanium Dioxide (CI 77891), Boron Oxide, Boron Nitride, Zinc Powder (CI 77945), Annatto (Bixa orellana), Helianthus Annuus (Sunflower) Seed Oil, Tin Oxide (CI 778161), Aluminum Hydroxide, Stearic Acid



APIS



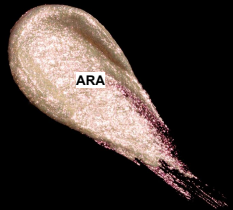
SCARABAEUS



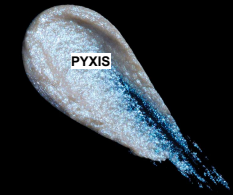
SERPENS



ANDROMEDA

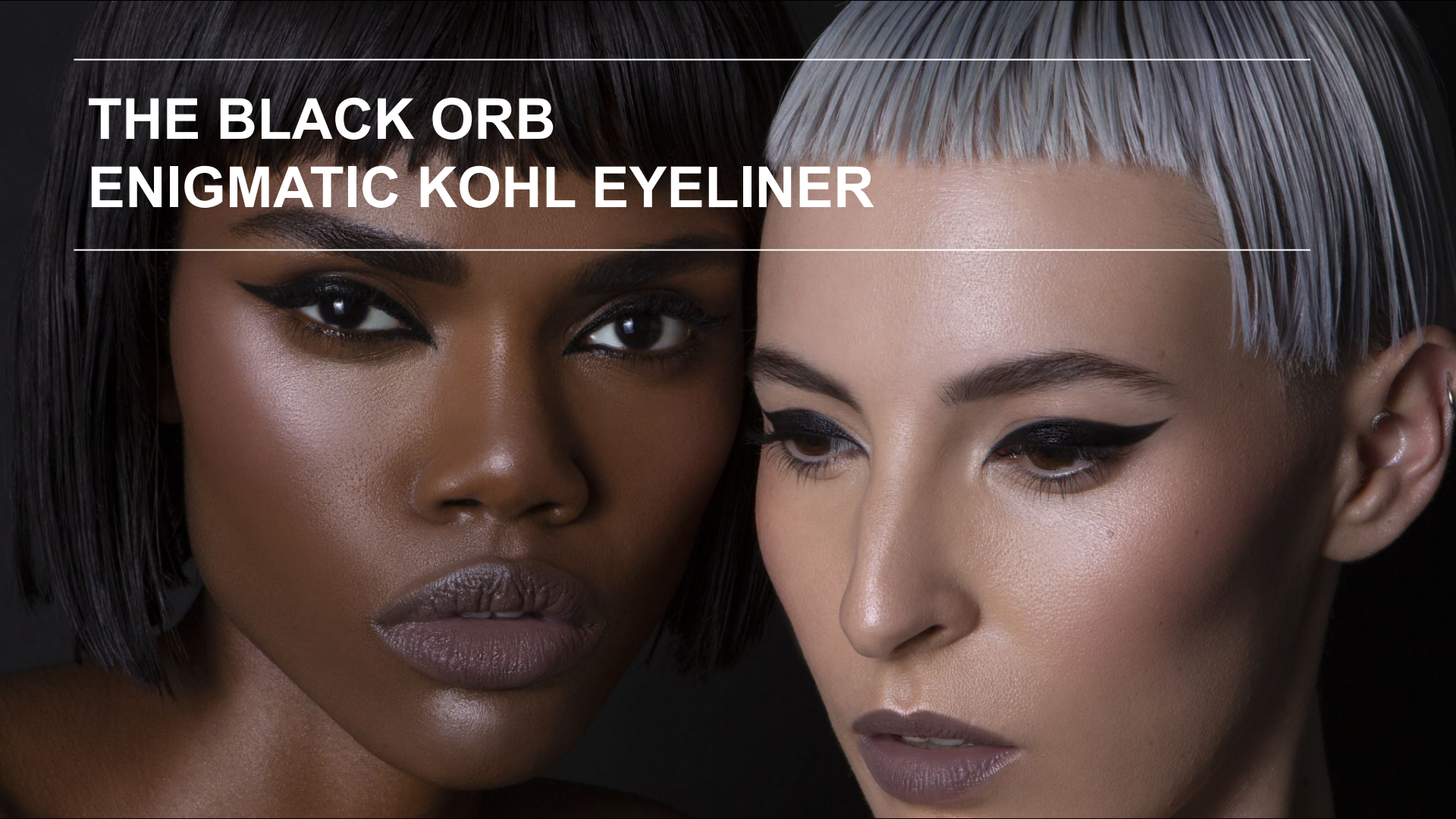


ARA



PYXIS

THE BLACK ORB ENIGMATIC KOHL EYELINER



THE BLACK ORB ENIGMATIC KOHL EYELINER

2 SHADES

The Black Orb holds dark secrets. Hidden within this mysterious vessel lies the most exceptional kohl eyeliner; The Black Orb casts the deepest shadows, defines the sharpest lines, and smokes out into the darkest gaze.

How to Apply

For a winged look, we recommend using a densely-bristled, fine angled brush. For a smoky, diffused look, use a smudge brush and blend out from the lashline. Using your fingertip for application is perfect for an intensely pigmented, undone smokey eye.

Answers to Common Questions

The Black Orb is neither a gel nor a powder. This rich crème liner is a dense, incredibly pigmented kohl formula, and might be unlike others you have tried.



PRODUCT DETAILS: Net wt. 0.24 oz / 6.85 g

Ingredients: Caprylic/Capric Triglyceride, Silica (Silicon Dioxide), Capryloyl Glycerin/Sebacic Acid Copolymer, Jojoba Esters, Euphorbia Cerifera (Candelilla) Wax, Tocopherol (non-GMO soy derived), Rosmarinus Officinalis (Rosemary) Leaf Extract, Carnauba Copernicia Cerifera (Carnauba) Wax MAY CONTAIN: Iron Oxides (CI 77491, CI 77492, CI 77499), Mica (CI 77019), Diheptyl Succinate, Carmine (CI 75470), Ultramarines (CI 77007), Titanium Dioxide (CI 77891), Calcium Aluminum Borosilicate, Calcium Sodium Borosilicate, Tin Oxide (CI 778161), Zinc Oxide (CI 77497), Copper Powder, Bronze Powder, Bixa Orellana (Annatto), Boron Nitride, Helianthus Annuus (Sunflower) Seed Oil



BLUSH + MULTI

COLOR NECTAR PIGMENT BALM



COLOR NECTAR PIGMENT BALM

4 SHADES

Color Nectar Pigment Balm is for every part of the face, and always vibrant, moisturizing, blendable and easy to apply. Their irresistible jelly texture and finish makes these these palm-sized translucent colors perfect to keep with you always and wear every day.

This range of perfectly translucent yet stunningly vibrant shades inspired by sweet flowers in bloom, the wild lure of pollinators, glistening honey, and the hum of the hive. These are ambrosial formulas with an irresistible jelly texture and finish.

How to Apply

Each multi-use balm shade can be worn everywhere you are inspired to put it: lips, eyes and cheeks. Creating looks is intuitive and remarkably easy. Applied with fingertips, beauty sponges or brushes, they create the most stunning stained glass or watercolor-like makeup effect. Their rich and emollient texture imparts a sheer, dewy tint that can build to incredible vibrancy. As with any cream product, we recommend tapping on to build up vibrancy, and swiping to take it down.

Answers to Common Questions

The natural beeswax used in Color Nectar Pigment Balm creates a natural protective barrier. When using one for the first time, it may need to be warmed up and swiped to achieve the perfect application. The answer is actually quite simple: swirl your finger on the surface to create warmth and break the barrier.

PRODUCT DETAILS: Net wt. 0.11 oz / 3.2 g

Ingredients: Simmondsia Chinensis (Jojoba) Seed Oil, Ricinus Communis (Castor) Seed Oil, Lanolin USP, Silica (Silicon Dioxide), Euphorbia Cerifera (Candelilla) Wax, Cera Alba (Beeswax), Copernicia Cerifera (Carnauba) Wax, Rosmarinus Officinalis (Rosemary) Leaf Extract, Helianthus Annuus (Sunflower) Seed Oil, Lavandula Angustifolia (Lavender) Oil, Tocopherol (Non-GMO Soy Derived) MAY CONTAIN: Carmine (CI 75470), Iron Oxides (CI 77491, CI 77492, CI 77499), Bixa Orellana (Annatto), Titanium Dioxide (CI 77891)



BEE STING



BLOODFLOWER



GLASSWING



HUMMINGBIRD

INNER GLOW CRÈME PIGMENT



INNER GLOW CRÈME PIGMENT

6 SHADES

These bold, stunningly versatile multi-use shades that can be worn on any part of the face. Apply to the cheeks, lips and eyes by blending out for a sheer wash, or build up to create bold color.

How to Apply

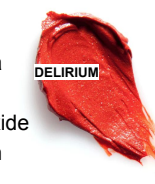
Apply with fingertips, sponge, or any preferred brush type; swipe in the pan for bold color payoff or dab for a hint of color. When using fingertips or a sponge, tap or bounce to build up color, and swipe to sheer it out. For a soft application, try a fluffy brush and swirl to create a diffused look.

Answers to Common Questions

If creasing on the eyes is a concern: though some creasing may be inevitable with a crème product, try applying a dusting of translucent setting powder over the top.

PRODUCT DETAILS: Net wt. 0.13 oz / 3.80 g

Ingredients: Simmondsia Chinensis (Jojoba) Seed Oil, Ricinus Communis (Castor) Seed Oil, Lanolin USP, Silica (Silicon Dioxide), Euphorbia Cerifera (Candelilla) Wax, Cera Alba (Beeswax), Copernicia Cerifera (Carnauba) Wax, Rosmarinus Officinalis (Rosemary) Leaf Extract, Lavandula Angustifolia (Lavender) Oil, Tocopherol (Non-GMO Soy Derived) MAY CONTAIN: Carmine (CI 75470), Mica (CI 77019), Iron Oxides (CI 77491, CI 77492, CI 77499), Bixa Orellana (Annatto), Zinc Oxide (CI 77497), Titanium Dioxide (CI 77891), Boron Nitride, Boron Oxide, Bronze Powder (CI 77400), Copper Powder (CI 77400), Calcium Sodium Borosilicate, Helianthus Annuus (Sunflower) Seed Oil, Tin Oxide (CI 778161), Zinc Powder (CI 77945)



HIGHLIGHT



RARE LIGHT CRÈME LUMINIZER



RARE LIGHT CRÈME LUMINIZER

4 SHADES

This crème highlighter imparts an ethereal glow that subtly shifts and transforms, creating a healthy, enlivened, lit-from-within radiance.

How to Apply

Tap onto the apples of the cheeks and blend them up to the temples, and dab onto the inner corners of the eyes and Cupid's bow. For a more dramatic glow, apply to all of the areas of the face where the sun would naturally hit: bridge of the nose, chin, brow bone and forehead above the arch of your eyebrow. When applying, remember to pat them on in a tapping motion instead of wiping to get the most out of your product.

Answers to Common Questions

Beeswax creates a natural protective barrier. The first time you use a Rare Light Crème Luminizer, swirl your finger on the surface to create warmth and break the barrier.

PRODUCT DETAILS: Net wt. 0.2 oz / 5.6 g

Ingredients: Simmondsia Chinensis (Jojoba) Seed Oil, Lanolin USP, Ricinus Communis (Castor) Seed Oil, Euphorbia Cerifera (Candelilla) Wax, Cera Alba (Beeswax), Copernicia Cerifera (Carnauba) Wax, Rosmarinus Officinalis (Rosemary) Leaf Extract, Lavandula Angustifolia (Lavender) Oil, Tocopherol (Non-GMO Soy Derived) May Contain: Mica (CI 77019), Titanium Dioxide (CI 77891), Titanium Dioxide (nano), Tin Oxide (778161), Iron Oxides (CI 77491, CI 77492, CI 77499), Carmine (CI 75470), Bixa Orellana (Annatto), Helianthus Annuus (Sunflower) Seed Oil, Boron Nitride, Boron Oxide, Calcium Sodium Borosilicate, Zinc Powder (CI 77945), Bronze Powder (CI 77400), Copper Powder (CI 77400), Stearic Acid (Coconut Derived), Aluminum Hydroxide



THE ALCHEMIST HIGHLIGHT INTENSIFIER



THE ALCHEMIST HIGHLIGHT INTENSIFIER

1 SHADE

The Alchemist is the highlighter for your highlighters, a transformative topper for your favorite luminous products. It adds a dewy finish and creates mesmerizing iridescent glimmer while maintaining the color of the highlighter beneath. The result is an unmatched radiance that sparkles like sunlight on sea water.

How to Apply

Our favorite way to apply The Alchemist is with fingertips. Swirl to pick up product, and then apply by tapping it on to achieve the most radiance possible. It works beautifully over any type of highlighter, cream or powder.

Answers to Common Questions

- The Alchemist can also be worn on it own, without another highlighter beneath it.
 - The Alchemist does not contain any plastic-based glitters.
 - The shimmer is complex, artful and mature, and it does have a lot of sparkle.
- Rare Light -Crème Luminizers are a great alternative for anyone looking for glow without glimmer.
- We do not recommend using beauty sponges to apply this product.

PRODUCT DETAILS: Net wt. 0.19 oz / 5.4 g

Ingredients: Ricinus Communis (Castor) Seed Oil, Calcium Sodium Borosilicate, Euphorbia Cerifera (Candelilla) Wax, Titanium Dioxide (CI 77891), Lavandula Angustifolia (Lavender) Oil, Silica (Silicon Dioxide), Tin Oxide (CI 77861), Tocopherol



LIPS



ENCHANTED LIP SHEER



ENCHANTED LIP SHEER

7 SHADES

Inspired by ancient botanicals, these highly moisturizing lip sheers offer translucent yet vibrant color. Enchanted Lip Sheers offer buildable pigmentation that is remarkably lightweight on the lips; even the boldest shades feel like a comfortably long-wearing balm.

How to Apply

Apply directly from the bullet or diffuse with your fingertip. Enchanted Lip Sheers can also be worn on the eyes and cheeks as buildable crème colors.

Answers to Common Questions

The natural beeswax used in Enchanted Lip Sheer creates a natural protective barrier. When using one for the first time, it may feel drier than expected. The answer is actually quite simple: the warmth of your lips—or even the back of your hand—will get application running smoothly after a few swipes.

PRODUCT DETAILS: Net wt. 0.06 oz / 1.8 g

Ingredients: Ricinus communis (Castor) Seed Oil, Simmondsia Chinensis (Jojoba) Seed Oil, Silica (Silicon Dioxide), Euphorbia Cerifera (Candelilla) Wax, Cera Alba (Beeswax), Copernicia Cerifera (Carnauba) Wax, Rosmarinus Officinalis (Rosemary) Leaf Extract, Lavandula angustifolia (Lavender) Oil, Tocopherol (Non-GMO Soy Derived) MAY CONTAIN: Carmine (CI 75470), Mica (CI 77019), Iron Oxides (CI 77491, CI 77492, CI 77499), Zinc Oxide (CI 77497), Titanium Dioxide (CI 77891), Bixa Orellana (Annatto), Bismuth Oxychloride (CI 77163), Bronze Powder (CI 77400), Copper Powder (CI 77400), Calcium Sodium Borosilicate, Helianthus Annuus (Sunflower) Seed Oil, Tin Oxide (77861), Aluminum Hydroxide, Stearic Acid (Coconut Derived)



SWARM

WATER VIOLET

DATURA

WHITETHORN

NARCISSUS

BITTERSWEET

DEVIL'S CLAW

FORBIDDEN LIPSTICK



FORBIDDEN LIPSTICK

4 SHADES

An intensely saturated, rich and luxuriant lipstick for bold, daring color and enduring moisture. Forbidden Lipstick offers beautifully dense pigmentation that is remarkably lightweight on the lips; even the boldest shades feel like a comfortably long-wearing balm.

How to Apply

Apply directly from the bullet or diffuse with your fingertip. Forbidden Lipstick can also be worn on the eyes and cheeks as bold crème colors.

Answers to Common Questions

The natural beeswax used in Forbidden Lipstick creates a natural protective barrier. When using one for the first time, it may feel drier than expected. The answer is actually quite simple: the warmth of your lips—or even the back of your hand—will get application running smoothly after a few swipes.

PRODUCT DETAILS: Net wt. 0.06 oz / 1.8 g

Ingredients: Ricinus communis (Castor) Seed Oil, Simmondsia Chinensis (Jojoba) Seed Oil, Silica (Silicon Dioxide), Euphorbia Cerifera (Candelilla) Wax, Cera Alba (Beeswax), Copernicia Cerifera (Carnauba) Wax, Rosmarinus Officinalis (Rosemary) Leaf Extract, Lavandula angustifolia (Lavender) Oil, Tocopherol (Non-GMO Soy Derived) MAY CONTAIN: Carmine (CI 75470), Mica (CI 77019), Iron Oxides (CI 77491, CI 77492, CI 77499), Zinc Oxide (CI 77497), Titanium Dioxide (CI 77891), Bixa Orellana (Annatto), Bismuth Oxychloride (CI 77163), Bronze Powder (CI 77400), Copper Powder (CI 77400), Calcium Sodium Borosilicate, Helianthus Annuus (Sunflower) Seed Oil, Tin Oxide (CI 77861), Aluminum Hydroxide, Stearic Acid (Coconut Derived)





COMPLEXION

THE ETHEREAL VEIL CONCEAL AND COVER



THE ETHEREAL VEIL CONCEAL AND COVER

12 SHADES

These chameleon shades adapt to your undertones and offer a softly diffused, natural silk finish. Use for spot concealing, under-eye brightening, and full-face complexion enhancement. With a first ingredient of jojoba oil, and key ingredients including frankincense, castor oil and lanolin, this is an artfully balanced skin-nourishing formula.

How to Apply These Colors

Apply with fingertips or your favorite complexion brush. As a spot concealer, apply a shade close to your base color. For under eye color correction, choose a shade 1-2 shades lighter than your spot concealing color to brighten.

Answers to Common Questions

Follow your normal skincare routine, including moisturizer, before applying.

PRODUCT DETAILS: Net wt. 0.19 oz / 5.4g

Ingredients: Simmondsia Chinensis (Jojoba) Seed Oil, Ricinus Communis (Castor) Seed Oil, Lanolin USP, Euphorbia Cerifera (Candelilla) Wax, Copernicia Cerifera (Carnauba) Wax, Cera Alba (Beeswax), Rosmarinus Officinalis (Rosemary) Leaf Extract, Boswellia Carterii (Frankincense) Oil, Tocopherol (Non-GMO Soy Derived) MAY CONTAIN: Iron Oxides (CI 77491, CI 77492, CI 77499), Titanium Dioxide (CI 77891), Silica (Silicon Dioxide), Mica (CI 77019), Titanium Dioxide (Nano), Tin Oxide (CI 778161), Carmine (CI 75470), Bixa Orellana (Annatto), Zinc Oxide (CI 77497), Helianthus Annuus (Sunflower) Seed Oil, Boron Nitride, Boron Oxide, Bronze Powder (CI 77400), Copper Powder (CI 77400), Calcium Sodium Borosilicate, Zinc Powder (CI 77945), Aluminum Hydroxide, Stearic Acid (Coconut Derived)



AWARDS + PRESS



VOGUE

ELLE allure

InStyle

BAZAAR Harper's

Us WEEKLY

marie claire

TOWN&COUNTRY

NYLON



REFINERY29

NEW BEAUTY[®]

Bustle

People

SHAPE

WHO WHAT WEAR

mindbodygreen

elite daily

BYRDIE

INTO THE GLOSS

Rituel de Fille

ANCIENT PIGMENT. MODERN COLOR.